

Historic, archived document

Do not assume content reflects current scientific knowledge, policies, or practices.

1923

SPRING AND SUMMER

JACKSON'S CATALOG

PIEDMONT GREENHOUSES

Specialties -- Roses and Chrysanthemums

LARGEST GROWER OF ROSES

LIBRARY
FEB 17 1923 ★

U. S. Department of Agriculture
IN THE SOUTH



Jonkheer J. L. Mock Roses

J. E. JACKSON

GAINESVILLE, GEORGIA

Introduction

**GET GUARANTEED STOCK FROM
A FIRM IN WHICH YOU
HAVE FAITH**

The greatest purpose of this catalogue is to acquaint our many friends and customers with a better knowledge of plants for the home and garden. As we send it forth we are glad to say we are in a position to give you better service than ever. Since our last issue we have erected a new, modern, up-to-date office and packing house, with

many of our greenhouses reconstructed anew. This brings into line a plant corresponding with the splendid business we have built up in the last thirty-five years and insures to our customers plants and service of the highest quality.

Our stock of plants was never better than now, all clean, healthy, vigorous, and most important of all, **true to name.**

Visitors are always welcome; our greenhouses are open to the public.

ROSES OUR SPECIALTY.

We have roses for every garden—old fashioned and right up to the latest and best varieties. Grown in 2½ to 4-inch pots, they will bloom profusely the first year. You will note the sensational “Jackson Set of 12 Everblooming Roses.” It includes many of the best varieties, and if you really don't know roses we urge you to try this set. One trial will make you a lover of Roses.

CHRYSANTHEMUMS.

Don't fail to notice our “Mum” list, a wonderful collection of the best in America. We ship you plants that will grow and be prize winners. We grow thousands of these beautiful flowers for the trade. Our Mums are known all over the country.

FERNS.

We give one large house to Ferns and we offer to you this season two of the latest introductions, Macauii and Verona. They have come to stay with us. We have had them on trial for a year. Macauii is far superior to any of the Boston types. A splendid fern for the amateur as it grows well in the house. Verona looks delicate, but stands erect. It is the best in the Ostrich Plume class. Very easy to grow.

GERANIUMS.

We are proud of our Geraniums and they are admired by all who have had the opportunity of seeing them and we have reduced the price to the lowest minimum, so you can share with us the joy of having some of these grand varieties, both single and double.

WEDDING BOUQUETS, CORSAGES and FLORAL DESIGNS.

This work is done by an experienced designer, and we guarantee it to be the best possible, both in quality of flowers and make-up. Great care is exercised in packing. We ship flowers to all points in the country.

WRITE US YOUR TROUBLES AND SUCCESSES.

It is always a pleasure to hear from our customers. If you have been successful with our plants, it is encouraging to know it. If at any time you have been dissatisfied, try us again. If given the opportunity, we will adjust it. We want to please you, and we will.

We want the names of every flower lover in the country. Will you help by sending us the names of those whom you know? We will appreciate it, and we will send them by return mail one of our new catalogues.

We thank you for past favors and we will ever strive to please you.



**See Inside Back Cover
For Terms.**

J. E. JACKSON, Gainesville, Ga.

Jackson's Catalog

Spring and Summer 1923



SPECIALTIES

ROSES

—
Chrysanthemums

—
**Greenhouse
AND
Bedding
Plants**



Largest Grower of

Roses

in the South



J. E. JACKSON

Piedmont Greenhouses Gainesville, Ga.

Jackson's Set of 12 Ever- blooming Roses for only \$1.00

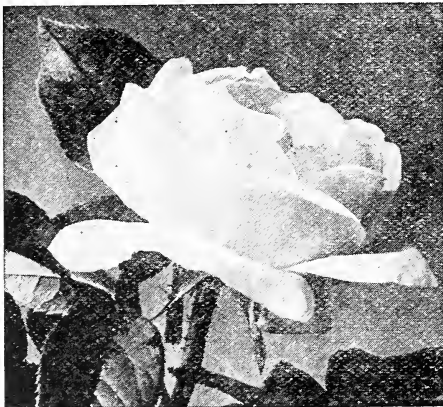
These are selected from among our very best and most beautiful Roses and will surely please any lover of fine Roses. See the price when you select them. I make this offer in order to get the good Roses established among my trade.



Every lover of beautiful flowers appreciates the beauty of a Rose Garden.

REMEMBER—The twelve Roses below are from two and one-half inch pots, for \$1.00, or strong 2-year-old plants from four-inch pots, for \$4.00. Satisfaction guaranteed.

ALEXANDER HILL GRAY.—Deep lemon-yellow which intensifies as the blooms develop. A perfectly formed flower with a high-pointed center.



Blumenschmidt

BRIDE.—White with delicate flush on outer petals; very beautiful in bud or open flowers; blooms profusely.

BLUMENSCHMIDT.—Pure citron-yellow, outer petals edged tender rose. A sport from Mad. Francisca Kruger.

CATHERINE MERMET.—Bright flesh color, full and finely formed.

DUCHESSE DE BRABANT.—Soft, rosy pink; good bloomer. A general favorite.

ETOILE DE FRANCE.—The Gold Medal Rose of France, and claimed by the raiser, J. Pernet Ducher, of Lyons, France, to be the finest rose he has ever sent out. We believe with him that it has no superior. The flowers are very large and borne on good, long, stiff stems; color a lovely shade of clear crimson velvet; very fragrant.

GENERAL DE TARTAS.—A first-class rose for bedding, brilliant carmine, large size; very double, full and fragrant.

LADY HILLINGDON.—A long, slender pointed bud of brilliant, deep apricot-yellow; very free flowering and a good grower; a very striking decorative rose. Awarded gold medal.

MAD. FRANCISCA KRUGER.—Deep yellow, sometimes rich and glowing, and at other times dark, with shadings of copper and rose; large and double.

MAMAN COCHET.—One of the best. Of strong, vigorous growth; the flowers are large, of perfect form and produced on long, stiff stems. Color deep rose pink, the inner side of the petals being of silvery rose.

MRS. B. R. CANT.—A splendid garden rose; solid even color; clear, bright rosy pink; large size, perfectly double and full; heavy bloomer, particularly fine in the fall, and is a clean, handsome grower.

SAFRANO.—Bright apricot yellow, tinged with rose; valued for its beautiful buds.

Roses

No flower is so universally popular as the Rose, the "Queen of Flowers." It is everywhere wanted and always admired.

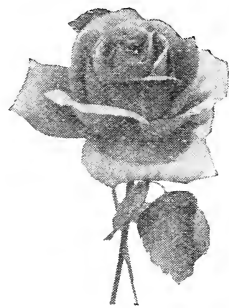
The demand for roses is increasing every year, and I feel justified in stating that my collection is unsurpassed.

DIRECTIONS FOR PLANTING.

Roses will grow in any ordinary fertile ground, but they are particularly fond of a heavy soil, liberally enriched and well cultivated. The ground should be well spaded and pulverized to the depth of a foot or more, and enriched by digging in a good coat of any well-decayed manure. When the ground is thoroughly prepared, fine and in nice condition, put in the plant slightly deeper than it was before, and cover it with fine earth, taking care to draw it closely around the stems and pack firmly. It is important that the earth be tightly pressed on roots; water immediately after planting, so as to settle the soil, and if hot or windy, it may be well



Columbia



Francis Scott Key

to shade for a few days. The ground should not be allowed to bake or become hard, but should be stirred frequently with hoe and rake so as to keep light and mellow, as well as free it from weeds and grass. The proper time to prune is early in the spring before growth has commenced; no exact time can be given, as that depends on the locality. The Hybrids must be cut back severely. They bloom best on strong new wood. In pruning the everblooming Roses all winter killed branches should be removed, also the wood which has become exhausted after several years' blooming, and younger shoots should be allowed to take their place.

CREAM OF THE NEW ROSES

We here offer what is good in the new Tea and Hybrid Tea Roses. To have what is good you must try these Roses. They are the best that England, France, Luxemburg, Germany, Italy, Ireland, Holland and America can produce.

All Nice, Strong, Well-Rooted Plants, from 2 1/2-inch and 4-inch pots.

These Plants are at this date, October 1, 1922, rooted and growing in pots.

ALEXANDER HILL GRAY.—Deep lemon-yellow which intensifies as the blooms develop. A perfectly formed flower with a high-pointed center. **25c; 2 years, 50c.**

COLUMBIA (H. T.).—A new American Rose, grown by the veteran rosarian, E. G. Hill. It is a very vigorous grower of a true pink shade, deepening as it opens to glowing pink. A peculiarity of this variety is that the shades all become more intense until the full maturity of the open flower is reached, and this color is enduring. **25c each; 2-year plants, 50c.**

CRUSADER (New).—A big, strong growing variety, robust and rugged in every characteristic. The growth is heavy and the flower stem strong and heavy. It is free flowering and the blooms are big and double and in color a rich velvety crimson. A free flowering red Rose that is a wonder. **25c; 2 years, 50c.**

DOUBLE WHITE KILLARNEY.—Pure white sport from White Killarney; has much larger bud. **35c; 2 years, 75c.**

ETOILE DE FRANCE.—The Gold Medal Rose of France, and claimed by the raiser, J. Pernet Ducher, of Lyons, France, to be the finest rose he has ever sent out. We believe with him that it has no superior. The flowers are very large and borne on good, long, stiff stems; color a lovely shade of clear crimson velvet; very fragrant. **25c; 2 years, 50c.**

EDWARD MAWLEY.—By its marvelous outstanding qualities is now regarded by rosarians as the greatest advance and most wonderful rose yet raised. Finest of all dark Crimson Roses. **Prices, 2 1/2-inch pots, 25c; 2 years, 50c.**

FRAU KARL DRUSCHKI (The White American Beauty or Snow Queen).—An everywhere hardy, vigorous grower, with bright green leaves delicately veined; splendid long buds and magnificent snow white blooms with large saucer-shaped petals. Rightly named. **35c; 2 years, 75c.**

FRANK W. DUNLOP (Dunlop).—Did you see it at the International Flower Show at New York the past spring? Its record at the exhibition was: Winning silver medal for the best new pink Rose and gold medal sweepstakes for the best seedling in the show. Frank W. Dunlop was the best flower in the exhibition. Claimed to be better than Mrs. Charles Russell. **35c; 2 years, 75c.**

FRANCIS SCOTT KEY (H. T.).—It is very fitting that such a fine new Rose should be honored with the name of the author of the "Star-Spangled Banner," and also that it should hail from Baltimore, one of whose forts was being assailed when the inspiration came to the author to write our national anthem. The flowers are from large to very large, with sixty or more petals opening to a high center. The color is a magnificent deep red rose. Wherever it has been staged this Rose has swept all competitors from the boards and secured every prize it has entered for. Grand for the garden. **35c, 2 years old, 75c.**



Alexander Hill Gray



Mrs. Mackellar

MRS. MACKELLAR (H. T.).—The glorious blooms make this an imposing Rose. A deep citron or delicate pure canary color. As the large blooms gracefully expand the guard petals charmingly reflex and become pearly primrose-white of great decorative beauty. Award of merit (unanimous), R. H. S. London. **25c; 2 years, 50c.**

MURELLE.—A Rose of the type of Safrano, only a much stronger grower. It is a very free bloomer and is a Rose with a great future. Color rosy-blush flushed with saffron-yellow. **25c; 2 years, 50c.**

MAD. CAROLINE TESTOUT.—A charming variety of the LaFrance type; flowers large and double; color, bright satiny pink with rose center, strong grower; free flowering and very fragrant. **25c; 2 years, 50c.**

MADAME JENNY GUILLEMOT.—Deep Saffron-yellow, opening canary with dark golden shadings; buds long and pointed; petals and blooms immense, a very beautiful and upright grower and free bloomer. **25c; 2 years, 50c.**

MRS. AARON WARD.—Coppery-orange in the open bud, golden-orange when partly developed, pinkish-fawn of lovely shade when fully open, when it looks like a full fluffy-silk rosette. Color effect of the whole flower is Indian yellow **25c; 2 years, 50c.**

MRS. CHAS. RUSSELL.—Pink American Beauty, enormous in size, which lines into beautiful shape in flower, stem and foliage. **35c; 2 years, 75c.**

NATIONAL EMBLEM.—Dark crimson of perfect shape, habit and inflorescence; as a bedding, massing and cutting Rose it is unique. Buds long and pointed, opening to large, full, handsome flowers of great beauty, flowering freely and continuously. **25c; 2 years old, 50c.**



Jonkheer J. L. Mock

New Roses—Continued

GLADYS HOLLAND (H. T.).—Of magnificent form and size, color buff shaded orange-yellow, outside of petals pearly-peach. Very free flowering. Awarded gold medal National Rose Society of England. **25c; two-year plants, 50c.**

HADLEY.—Color a deep velvety crimson, retaining its brilliancy at all seasons. The variety is double and buds are well formed. The fragrance is excelled only by American Beauty. Strong rapid grower, and the flowers are borne on long stiff stems. **25c; 2-year-old, 50c.**

HOOSIER BEAUTY.—If you need a better red rose than you are growing, Hoosier Beauty will fill the bill. Color, glowing crimson-scarlet with velvety crimson shadings. The bud is long and opens into a magnificent bloom, dazzling in its velvety brilliance. **25c; 2-year-old, 50c.**

JONKHEER J. L. MOCK.—This grand rose is the strongest growing in Hybrid Tea class. Color clear imperial pink. Awarded two gold medals, one silver medal, and five first prizes in Europe. **25c; 2-year-old, 50c.**

KILLARNEY.—A splendid new rose, beautiful pointed buds and extra large flowers; bright coral pink, very fragrant and beautiful. **25c; 2-year-old, 50c.**

LADY HILLINGDON.—A long, slender pointed bud of brilliant, deep apricot-yellow; very free flowering and a good grower; a very striking decorative rose. Awarded gold medal **25c; two years old, 50c.**

MAD. BUTTERFLY.—Ophelia-like in appearance, but far deeper and richer color. Very attractive. **25c; 2 years old, 50c.**

New Roses—Continued

OPHELIA.—When Ophelia was sent out on its message of rose beauty to enhance the world, there was placed a tablet in the hall of rose fame to Wm. Paul & Son that will grow brighter with the flight of time. Salmon-flesh, shaded with rose; large, and of perfect shape; of excellent habit, the flowers standing up well on long, stiff stems and produced in great profusion. **25c; 2 years, 50c.**

PREMIER.—Already too well known to need description. A magnificent novelty in the class with Russell. Deep rose; fragrant; thornless; free. **25c; 2-year-old, 50c.**

RADIANCE.—A splendid and popular rose; deep pink in color. Will produce three-foot breaks without pinching. Almost mildew proof, and a wonderfully fine rose. **25c; 2 years old, 50c.**



White Killarney

petals is satiny crimson-scarlet. One of the freest blooming Roses extant. Makes a fine decorative subject and equally desirable for bedding. **Price, 25c; 2 years, 50c.**

SUNBURST.—A magnificent giant yellow rose, well adapted for outdoor growing, being a vigorous and healthy rose. Buds long and pointed, borne singly on long, stout stems. The color is superb orange copper or golden orange, with a deep orange center. It has proven invaluable for bedding and garden purposes. This rose creates a sensation wherever grown. **25c; 2 years old, 50c.**

WHITE KILLARNEY.—An offspring of the famous pink Killarney as described on page 3; identical with it except that the flowers are pure white. **25c; 2 years old, 50c.**



Radiance

RHEA REID.—Flowers large and double; very free-blooming and exquisitely fragrant; rich, dark velvety red. The best of all red garden roses to date. **25c; 2 years old, 50c.**

RED RADIANCE.—The Washington Red Radiance. A glowing crimson sport of Radiance with all the magnificent qualities of the parent; the enormous globular flowers on heavy canes are a sight to be long remembered. This variety will be in very heavy demand as soon as it is known. The color is dazzling crimson-scarlet. An improvement on the other Radiance sports that have appeared. **25c; 2 years old, 50c.**

RED LETTER DAY.—Cactus-flowered flowers of curious formation. An exceedingly beautiful Rose of infinite grace and charm. Its velvety, brilliant, glowing scarlet crimson buds and fully opened cactus-like flowers never fade, as the reflex of the



Red Letter Day

Select, New, Rare and Scarce Roses

All Nice, Strong, Well-rooted Plants, from 2½-inch Pots.

These Plants are at this date, October 1, 1922, rooted and growing in pots.

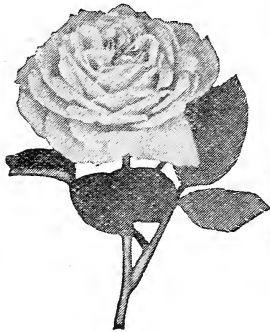
PRICE: 10c each; \$1.00 doz. Strong 2-year-old plants, 35c each; \$4.00 per doz. Our selection, not labeled, 20 2½ pot plants for \$1.00.



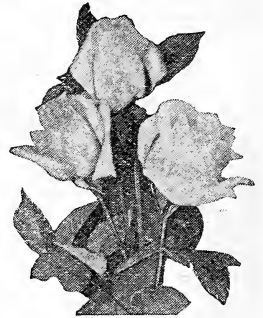
Duchess de Brabant



Bridesmaid



Bessie Brown



Bride



General de Tartas

CORNELIA COOK.—This beautiful rose is in great demand for its magnificent buds, which are large, perfect and pure white.

DUCHESS DE BRABANT.—Soft, rosy pink; good bloomer. A general favorite.

DEAN HOLE.—An intense salmon-pink, with bud of extraordinary length opening into a mammoth bloom of splendid substance.

DUCHESS OF ALBANY.—A sport from La France, retaining all of the characteristics of the type, with the bloom three or four shades darker.

AUGUSTINE GUINOISSEAU (White La France.)—Sport from La France, identical in habit, form and vigor, but in color it is a delicate blush.

BESSIE BROWN.—A rose of transcendent beauty, and one of the largest and fullest we have ever seen, color pure white, sometimes faintly flushed pink; petals enormous, shell shape.

BLUMENSCHMIDT.—Pure, citron-yellow, outer petals edged tender rose. A sport from Mad. Francisca Kruger.

BRIDE.—White with delicate flush on outer petals; very beautiful in bud or open flowers; blooms profusely.

BRIDESMAID.—A fine, clear, dark pink.

BURBANK.—A free-flowering everbearing rose, raised by Mr. Luther Burbank, known the world over as the "Wizard of Horticulture." The only rose which he was willing should bear his name. Color deep pink.

CATHERINE MERMET.—Bright flesh color, full and finely formed.

ETOILE DE LYON.—Beautiful chrome yellow, deepening at center to pure golden yellow.

FLORENCE PEMBERTON.—Creamy white, suffused pink; large, full, perfect in form, with very high pointed center; very fine.

F. R. PATZER.—A most beautiful and distinct rose of very free-flowering character. The color is creamy-buff, back of petals delicate warm pink. Valuable for garden culture.

GENERAL DE TARTAS.—A first-class rose for bedding, brilliant carmine, large size; very double, full and fragrant. (See page 10.)

GENERAL SUPERIOR ARNOLD JANSSEN.—A fine new rose. Color a deep, glowing rose of brightest color. Flowers of largest size, full and fragrant.

GOLDEN GATE.—Flowers are large, very double and full. Color rich creamy white, tinged and shaded with yellow; petals large, broad and frequently bordered with clear rose.

GRUSS AN TEPLITZ.—As a bedding rose this is one of the finest. Color scarlet, shaded to velvety crimson.

HELEN GOOD.—Helen Good is a genuine Cochet, being a sport from the world-famous variety, Maman Cochet. A delicate pink, each petal edged deeper, is totally distinct from Maman Cochet.

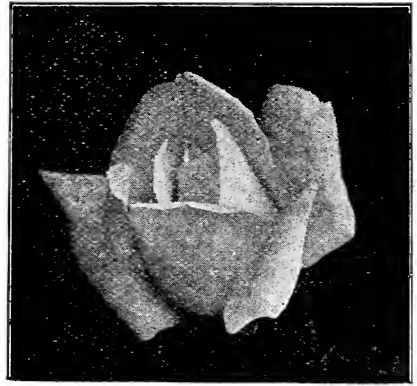
We are the largest growers of Roses in the South. Our years of experience are plainly visible in the character of plants we furnish our customers.

JACKSON'S ROSE PLANTS

Combine the best of plants producing beautiful blooms, and are furnished you at a moderate price. You will be more than pleased with them.



Mad. Francisca Kruger



Isabella Sprunt

Roses—Continued

HELEN GOULD.—One of the strongest growing and freest blooming Hybrid Teas ever known. In color a rich, glowing crimson. Buds long and pointed, forming full double blooms.

HELEN CAMBIER.—Flowers large and full, varying from rosy-flesh and salmon to copper; an extra fine and showy variety.

IVORY or WHITE GOLDEN GATE.—Pure white.

ISABELLA SPRUNT.—Bright canary yellow; beautiful buds.

JULES FINGER.—Extra large and finely formed flowers; full and fragrant. Color rosy scarlet, beautifully shaded with crimson.

KAISERIN AUGUSTA VICTORIA.—A vigorous grower; flowers extra large, and very double. Color creamy white.

LA DETROIT.—The color is shell pink, shaded soft rose, the outer petals cream color, with fragrance like Bon Silene.

LA FRANCE.—The oldest and best of the Hybrid Teas; deliciously fragrant; very large, full, round, globular form; color true pink.

LOUIS PHILIPPE.—Rich, dark, velvety-crimson; profuse bloomer.

LUCULLUS (The Black Rose).—Splendid, large, rich crimson; extra full and fragrant, very double and a constant and profuse bloomer.

MAD. ANGELIQUE VEYSSET (Striped La France).—Identical in all respects with its parent, La France, except it is much stronger in growth and the flowers are beautifully striped and shaded with a delicate white.

MAD. CAMILLE.—Delicate rosy-flesh, changing to salmon-rose; immense double buds.

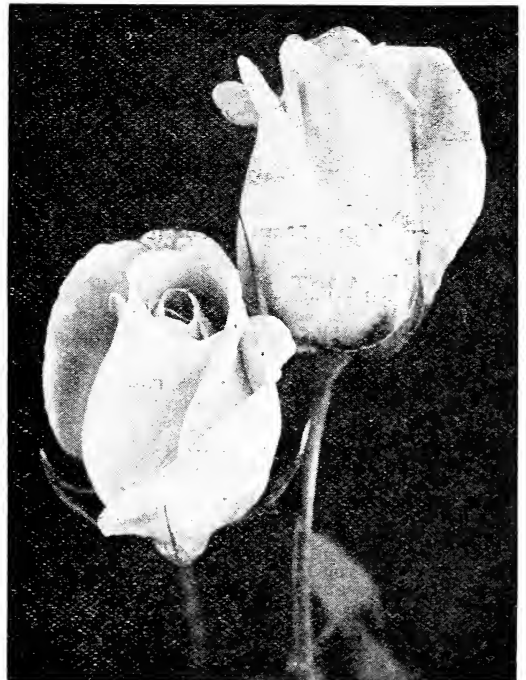
MAD. DE VATRY.—One of the very best and most satisfactory roses for general planting. It makes big clear buds and opens well, showing to great advantage. The color is a rich crimson-scarlet.

MAD. FRANCISCA KRUGER.—Deep yellow, sometimes rich and glowing, and at other times dark, with shadings of copper and rose; large and double.

MADISON.—A greatly improved Bride, and when we say improved we mean a genuine improvement. Best feature of Madison is the foliage does not mildew. After being well established, Madison will cut as many flowers as Killarney.

MAD. JEAN DUPUY.—A lovely high-class rose; color fine creamy pink with golden center; outer petals edged with red; a constant and abundant bloomer; almost thornless.

MAD. LAMBARD.—A first-class rose; extra full flower, double; beautiful rose color; tinged salmon and buff; buds and reverse of petals crimson.



Lady Hillingdon (See page 4.)

Roses—Continued

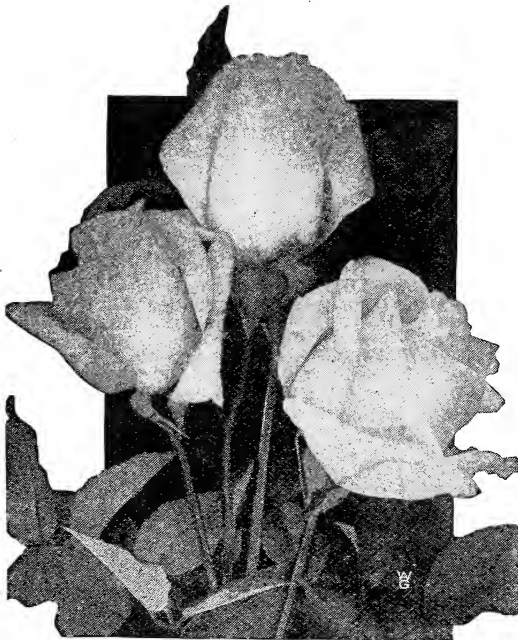
MALMAISON.—Rich, creamy flesh, changing to lovely fawn with rose center; very large, perfectly double.

MAMAN COCHET.—One of the best. It is of strong, vigorous growth; the flowers are large, of perfect form and produced on long, stiff stems. Color deep rose pink, the inner side of the petals being of silvery rose.

MARIE GUILLOT.—One of the standard varieties of Tea Roses; splendid for any use; especially desirable for summer rose beds; color pure white.

MARIE VAN HOUTTE.—A lovely rose; color white tinged with yellow; delicately shaded with pale rose on outer petals; full and double; sweet tea scent.

METEOR.—A rich, velvety-crimson, bright and striking; a constant bloomer.



White Maman Cochet

MRS. B. R. CANT.—A splendid garden rose; solid even color; clear, bright rosy pink; large size, perfectly double and full; heavy bloomer, particularly fine in the fall, and is a clean, handsome grower.

MME. P. EULER.—Very large flower, full and very lasting; form perfect; delightfully fragrant; a free flowering rose; color deep rose.

QUEEN SCARLET.—A constant and profuse bloomer; color rich velvety-scarlet.

SOUVENIR DE PIERRE NOTTING.—A seedling of M. Niel and Maman Cochet, with beautiful closely set foliage. Bloom is very large, perfectly full, of elegant form, and has a beautiful long bud; the colors are very bright, distinct and clear, and have no unpleasant tones; orange-yellow borders in carmine-rose.

SOUVENIR DE PRESIDENT CARNOT.—An ideal rose, combining strong, vigorous growth with long-stemmed, large flowers of great substance. A grand garden rose. Color light pink; edge of petals, flesh color.



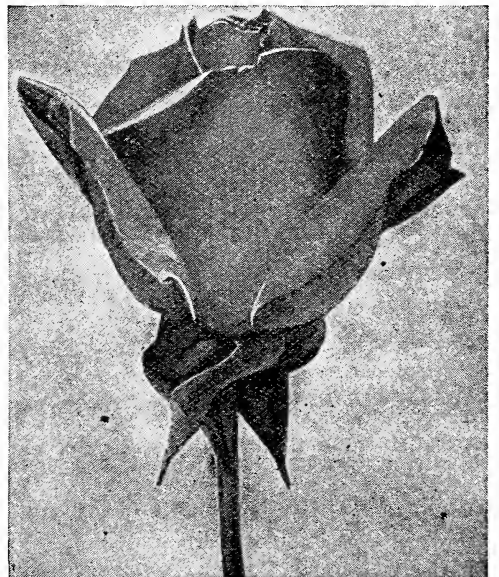
Souvenir de Pierre Notting

SAFRANO.—Bright apricot yellow, tinged with rose; valued for its beautiful buds.

WILLIAM R. SMITH.—Creamy-white with shadings of pink; a seedling from Maman Cochet and Kaiserin Augusta Victoria. Beautiful in form and color; glossy foliage; long stiff stems; vigorous in growth; a superb summer bedder.

WHITE MAMAN COCHET.—Identical with Maman Cochet, except the color is white; very desirable. Best white rose grown.

WELLESLEY.—Bright, clear, salmon-rose, reverse of petal silvery-rose.



Mrs. B. R. Cant



J. B. Clark

Hybrid Perpetual Roses

All Roses of this class are perfectly hardy. The flowers are very double and of the most gorgeous and dazzling colors, but they do not bloom perpetually as their name would lead one to suppose. They will give one grand crop of bloom in the spring, and some sorts bloom occasionally in the summer and fall.

Price, from 2½-inch pots, 25c each; two-year-old plants, 50c each.

GENERAL JACQUEMINOT.—Crimson, scarlet; large, full; very fragrant; excellent.

JUBILEE.—Rose of wonderful beauty, bearing large flowers 5 and 6 inches across; very full and double; buds long and graceful; color glowing velvety-crimson; fragrance delicious.

J. B. CLARK.—The color is unique among Roses being deep scarlet shaded blackish-crimson, with rich bloom like a plum; flowers are large and beautifully formed. Awarded the gold medal N. R. S.

MADAM CHARLES WOOD.—A true perpetual bloomer; flowers large, very double and full, and quite fragrant; color bright cherry-red. One of the best roses ever introduced for general planting.

MAD. MASSON.—Flowers as large as American Beauty, and same color. A deep rose or bright red; highly perfumed; a constant and free bloomer. Fine.

PAUL NEYRON.—Flowers immense; probably the largest rose grown, and one of the finest; color deep pink; very double and full; finely scented, with no suspicion of coarseness.

You will be thoroughly pleased with

Jackson's Rosebushes

They are sturdy plants with fine root systems. You will be surprised and delighted with the beautiful blooms, too.

Climbing' Roses

The Noisettes and Climbing Teas are included in this class, which is especially valuable in the South for covering porches, arbors, trellises and the like.

The plants obtain great luxuriance in our climate. All nice, strong plants, well rooted, from 2½-inch pots. Price, 10c each; \$1.00 per dozen. Strong 2-year-old 40c each; \$4.50 per dozen, except where noted.

AMERICAN PILLAR.—The flowers are of enormous size, three to four inches across, of a lovely shade of apple-blossom pink, with a clear white eye and cluster of yellow stamens. These flowers are borne in immense bunches. They last in perfection a long time, and are followed by brilliant red hips of berries, which are carried late into the winter. 25c; 2-year-old, 50c.

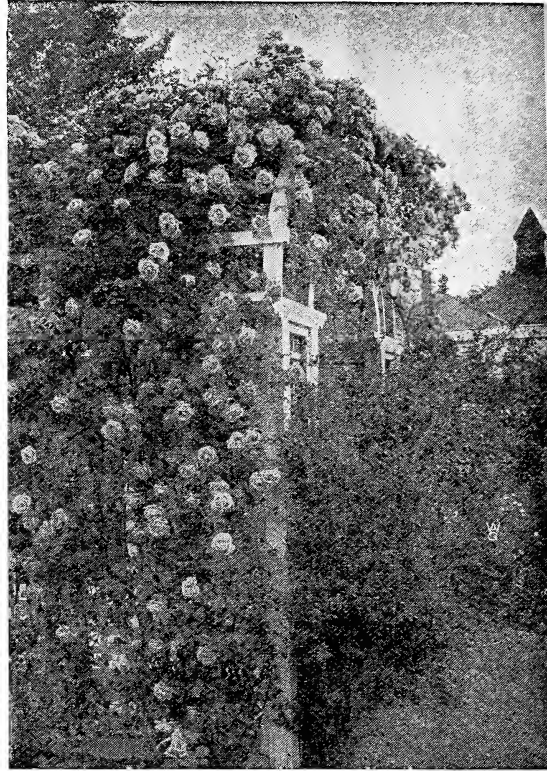
CLIMBING METEOR.—A rich, velvety-crimson; very bright and striking; a continuous and profuse bloomer; very sweet.

CLIMBING MAD. C. TESTOUT.—An exact counterpart of C. Testout, except that it is a very vigorous climber.

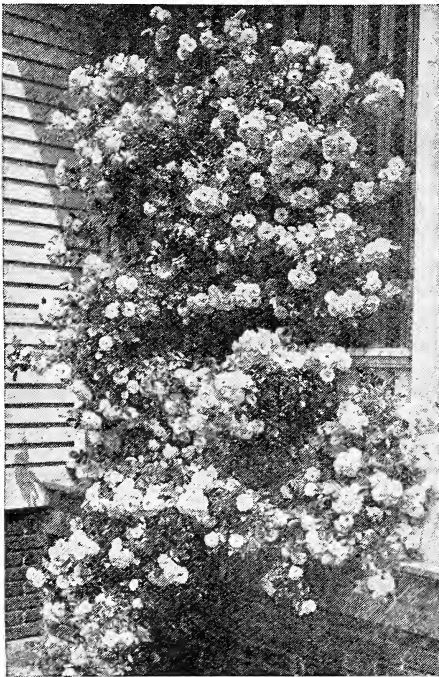
CLIMBING WHITE MAMAN COCHET.—If there is one rose that stands out in the affections of the people more than another it is White Maman Cochet. Here we have a climbing form that will become as popular a climber as its parent has as a bush rose. Grand, huge white flowers.

DOROTHY PERKINS.—Flowers are borne in large clusters, are very double, with prettily crinkled petals; beautiful clear shell-pink in color, lasting a long time without fading.

DR. W. VAN FLEET.—Flowers when open run four inches and over in diameter. The color is a remarkably delicate shade of flesh-pink on the outer surface, deepening to rosy-flesh in the center. The flowers are full and double, of delicate perfume; buds pointed.



Climbing American Beauty.



Dorothy Perkins.

GARDENIA (The Hardy Marechal Niel).—This grand Rose has proven itself hardy in Virginia and Tennessee. It is a deep golden-yellow of the largest size.

HIAWATHA.—This rose is just coming into its own, being largely forced in pots for Easter time, and its good qualities as a grand outdoor climber are becoming known. Its flowers are about one and one-half inches across, and produced in long, pendulous sprays, with frequently from forty to fifty flowers on a spray. In color it is brilliant, ruby-carmine, with a clear white eye and a mass of golden stamens; strong, vigorous growth, with bright green, glossy foliage, which is retained all winter.

LAMARQUE.—Pure white, with lemon-colored center; a good grower. An old favorite.

MADAM JULES GRAVERAUX.—A splendid rose of highest value. Makes long-pointed buds and extra large, double flowers of excellent substance. Color a pretty shade of chamois yellow, with rosy-peach center.

MARECHAL NIEL.—The grandest rose of any kind or color. The immense size and dark yellow-golden color of Marechal Niel flowers are familiar to all. 15c, 25c, 35c and 50c, up to \$1.00 each.

CLIMBING MAMAN COCHET.—No Rose we grow is so popular as Maman Cochet. Here we have an exact counterpart of that popular variety, except that it is a vigorous climber. All will welcome this new Rose.

CLIMBING AMERICAN BEAUTY.—A seedling from American Beauty with Wichuraiana and Tea blood in its veins. Same color, size and fragrance as American Beauty, with the addition of the climbing habit. Good foliage and better blooming qualities.



Paul's Scarlet Climber.

Climbing Roses

—Continued

CLIMBING KAISERIN, or MRS. ROBERT PEARY.—A most remarkable rose of recent introduction. An offspring of that grand variety Kaiserin Augusta Victoria.

CLIMBING MARIE GUILLOT.—Of a semi-climbing habit, and is identical in bloom with Marie Guillot, the loveliest of all white roses in bloom.

MARY WASHINGTON.—Flowers pure white; very sweet and produced in large clusters from early spring till frost. It is a strong grower and quite hardy.

PAUL'S SCARLET CLIMBER

It is not a Rambler, but an Entirely Distinct Hybrid

and without question the most important addition to our list of Climbing Roses in many years. No other Rose in any class can compare with it for brilliancy of color, which is a vivid scarlet that is maintained without burning or bleaching until the petals drop.

The flowers are of medium size, semi-double, very freely produced in clusters of from three to twenty flowers each on much branched canes, the plants being literally covered with flowers from top to bottom. It is of strong climbing habit and perfectly hardy. Price, 35 cents each; 2-year-old plants, 75c.

RED DOROTHY PERKINS, or EXCELSA.—Same as Dorothy Perkins with crimson flowers.

REINE MARIE HENRIETTE.—Clear cherry red. A strong, vigorous grower and free bloomer.

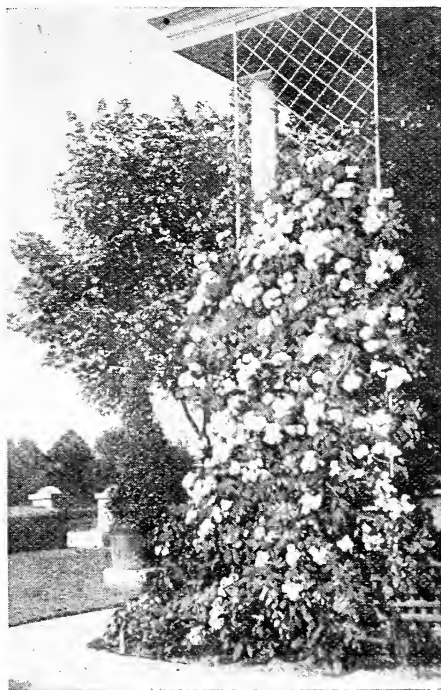
SILVER MOON.—Flowers very large, four and one-half inches and over in diameter. Pure white in color; petals of great substance, beautifully cupped, forming a clematis-like flower. The large bunch of yellow stamens in the center adds to its attractiveness. These flowers are borne on strong stems twelve to eighteen inches long, and are delicately scented. The plant is a strong grower, with large, glossy, bronze-green foliage. 25c; 2-year-old, 50c.

SOLFATERRE—Sulphur-yellow; Large, full, handsome.

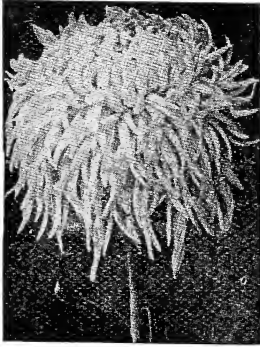
TAUSENSCHOEN, or THOUSAND BEAUTIES.—A climbing Rose that comes to us from Germany. The flowers upon first opening are the most delicate shade of pink ever seen in a rose, might be described as a white, delicate flushed pink, changing to rosy-carmine. It gets its name from its many flowers and the variation in coloring; beautiful; will become as famous as Crimson Rambler or Dorothy Perkins. We wrote the above a year ago, and now we can add that this rose is sweeping the country like a prairie fire. Simply a wonder.

WILLIAM ALLEN RICHARDSON.—Orange-yellow; outer petals lighter, center coppery yellow; strong grower; good bloomer.

WHITE DOROTHY.—Among Rambler Roses none has justly gained greater popularity than the beautiful pink Dorothy Perkins. The White Dorothy is a duplicate except in color, which is white, a decided acquisition to this class of roses.



White Dorothy.



Delight

Chrysanthemums

HOW AN AMATEUR MAY GROW CHRYSANTHEMUMS

The first important item in growing potted Chrysanthemums is the proper preparation of the soil. One-third manure and two-thirds sod stacked together and rotted (must be thoroughly rotted), and run through a coarse sieve is best. To one bushel of this soil add a double handful of pure "bone-meal," one handful of lime and one of wood ashes, and you are ready for potting. Drainage is of utmost importance, for without it the surplus water will sour the soil, the root will decay, and all your labor will have been in vain. About April 15 to May 1 get good, healthy plants from some reliable florist, and repot them at once in 3 ½ or 4-inch pots, and when the pots are filled with roots, repot into 6-inch pots, and from these when filled with roots, into 9 or 10-inch pots.



Nagirroc

In making the final shift, leave 1 ½ or 2 inches of space at the top of the pot to receive water, and later on, when the buds appear, this space can be filled with manure to act as a stimulant. Immediately after the last potting, plunge the pots in the ground up to the rim, place your pots in rows 2 feet apart by 1 foot, and water only when it is needed. Never allow the soil to become dry enough to wilt the plant. With a soft cord fasten the plant to a small neat cane-stake plunged deep enough to make steady, and if the branches are inclined to fall over, tie around the plant a cord which will act as a hoop and keep it in shape.

If a bushy plant is desired, when the plant is about 6 inches high, pinch out the top, this will cause other branches to appear, and when these branches are 4 or 5 inches long, pinch the top out, and so on until July 15, when you must give the final pinching. At this season you can begin to feed your plants with manure water, made by putting a shovelful of cow manure into a half-barrel of water. Give this once a week until the buds begin to form; then you can increase to twice a week. As the buds begin to swell, give it three times a week until the buds begin to show color; then give it once a week and as the buds begin to unfold withhold all stimulants. It should be said that soot water is good, given, say, once in two weeks in place of manure water. Now to grow fine flowers on long stems, you must watch the plant, and as soon as the buds are large enough you must remove all as fast as they appear, except the largest and strongest bud on the end of each branch; also remove all buds that appear at the junction of the leaves, and fine, large flowers will be your reward.

As to the plants grown in the open ground, it is best not to have it too rich; prepare as you would for your vegetable garden. In case you have some plants that have stood over winter and which come up in clumps, you must take them up and plant them, only one sprout in a place.

Let me tell you how I grow some of my finest blooms: I prepare the ground as above stated, and then plant in rows 2 ½ feet apart and 6 or 8 inches apart in the rows, and train plants to one flower each. Place stakes 1x1 inch thick and 4 feet high, 17 feet apart in the rows, and fasten to these stakes by giving a cord one turn around each stake. Three cords, 12 inches apart will be necessary, the first one 12 inches from the ground. Stretch them from one end of the row to the other, and tie the plants to these cords as fast as they grow up to them. Keep up a high state of cultivation, and water if needed during dry, hot weather. When the buds appear take all off except one to each plant as fast as they appear. At this time give them manure water (same as used for pot plants) about every ten days until they show color, then leave off the manure water, but don't allow them to get too dry. Follow this treatment and kindly let me know the result.

Cream of the New Chrysanthemums

BETSY ROSS.—Undoubtedly this is one of the finest whites yet produced from the Commercial growers' point of view. Its perfect incurved form, purity of color and sturdy upright growth are qualities most essential. It produces a very high percentage of perfect blooms regardless of the date of planting, and thus can be likened to Ivory and Tiger as being invincible. Maturing about November 5. Height, 4 feet from June planting. Date of bud, August 25. **25c.**

CHADWICK IMPROVED.—A pure white sport from W. H. Chadwick. Japanese incurved. Height, 5 feet. Date of bud, September 15. **25c.**



Mrs. H. S. Firestone

Cream of the New Chrysanthemums



Oconto



[Corporal J. F. Piper

CORPORAL J. FRED. PIPER.—Immense yellow on the type of the old Col. Appleton, but much larger and altogether better in color and growth. Stem and foliage ideal. Corp. Piper is assured of a nearly welcome from growers of exhibition blooms, looking for a really fine yellow. Crown bud any time after August 20th. Height, 5 feet. **25c.**

DELIGHT.—An immense reflexed pink that was awarded the Certificate of the Chrysanthemum Society. Scored 92 points. Color, clear, bright rose. Size enormous. Stem perfectly stiff and able to support the flower perfectly and any bud after August 15th. Height, 3½ to 4 ft. **15c.**

EARL KITCHENER.—Amaranth, with a silvery reverse. An enormous flower in a color not too plentiful in exhibition 'Mums at the present time. Stem, foliage and flower are alike tremendous. There will never be any question about weak neck or poor foliage with this variety. Bud August 20th. **15c.**

GOLDEN CHADWICK.—A yellow sport from W. H. Chadwick. By planting late this may be had for Thanksgiving. Height, 5 feet. Date of bud, September 15. **25c.**

G. F. MOSEMAN.—Fine old favorite; crimson with old gold reverse. **15c.**

MISS GRACE DURKIN.—Lovely sport of Nerissa. Identical in every respect except color, which is a clear, light pink. This variety will doubtless gain many friends on account of its beautiful coloring. A splendid grower, with handsome foliage. Crown bud any time after August 20th. Height, 5 feet. **15c.**

MRS. H. S. FIRESTONE.—The outstanding Novelty of the year. It is wonderfully massive, stem perfectly rigid and foliage right up to the flower. Color pinkish, chamois-buff. This variety will be found invaluable in the classes calling for "Any other color," in the exhibitions. First bud after August 15th. **50c.**

MRS. J. WILLIS BUHL.—Crimson of the very largest size and a welcome addition to this color, which is very much like Pockett's Crimson, but the plant is considerably taller in growth. Bud about August 25th gives best result as to color, size and finish of flower. **15c.**

MRS. J. LESLIE DAVIS (Pink Turner).—We consider it a great privilege to present this pink sport of Turner to our customers. We introduced the original variety (white) in 1912, and two years ago we introduced the yellow variety. With the pink sort we are now introducing it completes the trio. It is absolutely identical with Turner in every respect except color, which is a clear lavender-pink. The growth and habit are a duplicate of the original parent and no other description is necessary. Pink Turner will find a premier place on its own merits. Height, 5 feet. **25c.**

NERISSA.—Bright, rosy mauve. Fine form and stiff, upright growth, with rigid stem. **15c.**

ORANGE QUEEN.—We have been ten years striving for this color—a burnt orange. Admired by everyone and coming at Thanksgiving time, its color is in keeping with the season. Habit, dwarf, 3 to 3½ feet from June planting; short jointed; dark green foliage, extending up close under the bloom. Loosely incurved form, maturing November 20th from September 10th buds. When treated as an exhibition variety, securing a bud the first of August, it produces a wonderful flower. **50c.**

OCONTO.—Very popular as an early mid-season white. The large blooms are produced on strong upright stems. Height, 4 feet. Date of bud, August 25th. **25c.**

ODESSA.—A seeding from Merga, but much freer in growth and better in every way. Splendid in curve form, bright-yellow. It eclipses all the yellow in size and finish. Equal to William Turner. Fall. Date of bud, August 30. **15c.**

MRS. CHAS. W. JOHNSON.—Purest possible white, raised and named by the Secretary of the C. S. A. and certificated by this Society. Height about 4 feet. Bud August 25th and later. The foliage in this variety is carried right up to the flower and the stem is very rigid. Can be classed as a superb variety in all respects. Won C. S. A. Cup, New York, 1919, for best new variety not in commerce. Scored 97 points before C. S. A. Committee. **15c.**

MEUDON SURPRISE.—A sport of the well known Meudon, which will be invaluable when well distributed on the exhibition table. Color, pale fawn and maize yellow, with rose pink shadings on the petals. This will make a welcome addition to the Novelty colors in the exhibition classes of "twenty-four distinct varieties." Very robust in habit. **15c.**

MEUDON.—An immense flower of bright pink; same shade as Morton F. Plant. Habit of plant absolutely ideal. One of the strongest growers we have ever sent out. Dwarf grower, with beautiful foliage right up to the flower. Bud August 20th. **15c.**

NAGIROC (Golden Champion).—Finest exhibition bronze we have ever distributed; color, deepest glowing orange bronze, 45 inches in circumference; every petal reflexing showing the color to the best advantage. This is the variety exhibited at the shows under the provisional name of Golden Champion. Every bud makes a splendid flower. Stem and foliage perfect. Any bud after August 15th, **25c.**



Mrs. J. Leslie Davis
(Pink Turner)

Jackson's
Chrysanthemums
are the
Cream of
the best
Varieties.

Chrysanthemums

—Continued

ROSE PERFECTION.—A seedling from Chieftain. Is brighter and more constant in color. Can remain uncut after full maturity without impairing its beauty. An easy propagator, maturing the first week in November. Bud about September 10th. 50c.

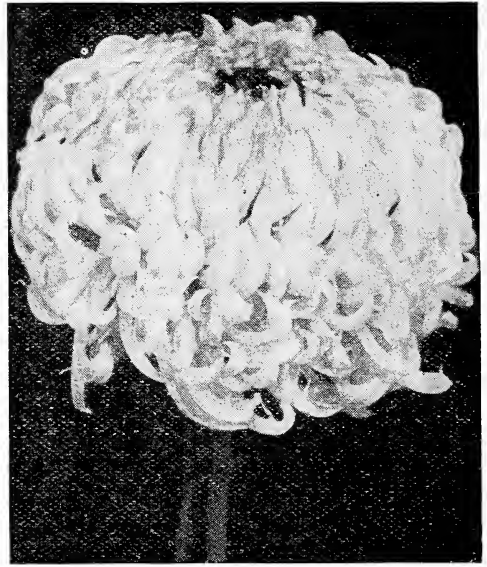
REFLEXED LOUISA POCKETT.—Duplicate of Louisa Pockett in every way except that the petals reflex instead of incurve, but in all other respects it is identical; having large foliage, strong stem and enormous flower. Height, 5 feet. Buds taken late August or early September give best results. 25c.

SERGEANT WM. E. YOUNG.—An enormous bronze, larger and heavier than W. H. Waite, though hardly so bright in color. One of the kind that is indispensable for short stem classes. Stem fully able to carry the flower erect. This variety will make a place for itself among all exhibitors. Bud after October 15th onwards. Height, 5 ft. 15c.

VERMONT.—This variety won the C. S. A. Silver Cup in New York, 1918 Fall Show for the best new variety not yet in commerce. It is a most welcome addition to our exhibition list of pinks. The flowers are of enormous size reminding one very much of the old variety M. L. Rousseau. Every bud produces a perfect flower and we feel sure Vermont will rank as one of the very best pink varieties in cultivation. Bud August 1st to 15th. Height, 5½ to 6 feet. 25c.

WM. RIGBY.—This was the largest variety exhibited at the shows in 1915; color beautiful bright canary yellow. Lower petals of this variety are 1½ inches in width. While we have considerable stock on hand of this variety, it roots very poorly and orders will be filled in rotation. 15c.

WHITE SURPRISE.—White as the name implies and a surprise when finished as the buds are far from prepossessing when opening and in this stage will be considered abortive by many. We



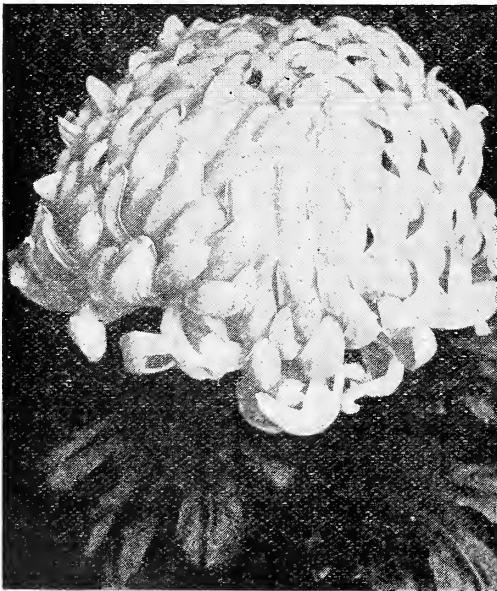
Vermont

are certain this variety will become a peer among the Thanksgiving white, occupying the same exalted place as Betsy Ross among the mid-season. The growing plants are red stemmed with wonderful tenacity when mature, and small dark green foliage. Four to 4½ feet, maturing November 20 from buds selected September 20th. 50c.

WHITE FRICK.—Identical with Helen Frick, excepting in color it is snow white. One of the best. 15c each.

New, Scarce and Desirable Chrysanthemums

Plants in this list 10c each; \$1.00 per dozen.
Our Selection, not labeled, 20 for \$1.00.



Sergeant, Wm. E. Young

BEATRICE MAY.—Snow white, sometimes flushed pink. 4½ feet high. Buds August 10 to 15. Blooms October 20th. This is the best white of its date; a splendid commercial and exhibition variety.

CHIEFTAIN.—A beautiful incurving pink of perfect shape. Certified in Boston, Philadelphia and Chicago. Perhaps the finest incurved pink commercial variety in cultivation today.

CHRYSOLORA.—This new variety can be briefly described as an early Col. D. Appleton, coming in fifteen days earlier; is of larger size, stronger stem, not quite as tall and in color is intermediate between this variety and Major Bonnafton. Best buds are those selected August 1st to 15th.

CHAS. RAGER.—Flower nicely incurving in form; pure snow-white with a grand stem, and foliage as handsome as "Eaton," a very easy doer.

COL. D. APPLETON.—A large Japanese incurved yellow, of fine finish and form. The color, a deep yellow, is of an even shade. Excellent stem with foliage to the flower. Mid-season.

CALUMET.—One of the very finest exhibition bronzes; large bloom, perfect in form and one of the easiest doers.

DR. ENGUEHARD.—One of the best introductions of recent years. Color a true pink, without the slightest trace of purple. Stem and foliage perfect. Equally valuable for exhibition or commercial purposes. Perfectly double.

ELBERON.—Large Japanese incurved, similar to Louiseau Rousseau in type and color; strong grower; stiff stem, with foliage well up to bloom.

New, Scarce and Desirable Chrysanthemums—Con.

GOLDEN WEDDING.—Richest Golden yellow, intense and dazzling in color.

GLENVIEW.—An enormous incurving globe of dark bronze and clear red. Dwarf grower with stiff stem; easy doer; a magnificent sort for exhibition or for commerce, as the color is very pleasing.

GOLDEN EAGLE.—Dwarf, easy doer; long, incurving golden petals.

HARVARD.—A particularly attractive flower and fine for exhibition; color is very dark crimson; grand stem and foliage. November 15th. Good from any bud.

LYNNWOOD HALL.—Pure white. One of the largest in size; perfectly incurved.

MRS. E. A. SEIDWITZ.—A very late commercial variety, of beautiful incurving form, quite full, brilliant pink, good enough to follow Chieftain. It is a fine addition to the list of commercial varieties. Flowers November 15th and later.

MRS. CHAS. H. TOTTY.—Very large, of a beautiful shade of light pink. Semi-dwarf.

MARIGOLD.—A monster yellow; flower unsurpassed both in size and color in its season; our first flowers of this variety were cut October 5th this year. Must be secured on an early bud.

MAJOR BONNAFFON.—Grand, incurved yellow of large size, full to the center; stem dwarf and erect.

MISS HELEN FRICK.—Immeasurably superior in every respect to Maude Dean; a Perrin seedling, its stems and foliage equal that variety, but there the resemblance ceases; a pure soft pink of varying shades. Very perfect shades; very perfect in form. Grand Thanksgiving variety.

MRS. HENRY ROBINSON.—Ready to cut October 14th, and increases in beauty until November 1st. In the entire Chrysanthemum family there is no grander white variety, no matter when it blooms. Immense, incurving, broad-channeled petals of great substance and of the purest white.

MRS. CLAY FRICK.—White sport from Wm. Duckman. Every "Mum" grower knows the variety, Wm. Duckman; the sport above named is identical with the parent save in color, which is almost white.

OCTOBER FROST.—Early October; the largest commercial white of its date.

OCTOBER HERALD.—Orange-yellow, similar in color to Old Gold or Modello; reflexing form, with somewhat twisted petals.

PRESIDENT JOHN EVERITT.—Color, very unique chamois-buff; when first opening, the petals are very closely incurved, forming a perfect ball, 27 inches in circumference. As the flower develops, the center petals open outward and show considerable of the bronzy-crimson reverse. Very dwarf, robust grower, and one of the largest flowers. This variety, with its enormous size and splendid habit will make its own place among the best. Bud August 15th onward.

POLLY ROSE.—Pure white sport from Glory of Pacific, and just as popular.

RAMAPO.—American seedling of Col. Appleton, which will take the place of that variety. It has all the good points of Appleton, the same color, splendid stem, foliage right up to the flower, and never shows a top-knot, as does Appleton.

ROMAN GOLD.—From September buds; a Japanese incurved and darker yellow. From August bud it produces a large reflexed flower, very suitable for exhibition tables but not so intense in color. Best bud for August 15th.

SMITH'S SENSATION.—A fine variety of soft cameo-pink. Largest and attracted more attention than any variety in my entire collection last fall.



Improved Hardy Chrysanthemums

SILVER WEDDING.—Purest white, very broad petals reflexed, forming a bold, handsome flower. One of the most distinct varieties of the season. Certificate at Philadelphia show; certificate and gold metal at Chicago show.

SUNSTONE.—Most pleasing and distinct in color combination. Petals hook up at end, showing light straw reverse; the upper surface is a bright yellow shading to red.

TIMOTHY EATON.—An enormous, globular Jap. incurved variety of perfect form and growth. Color pure white. It captured every prize for which it was entered; also C. S. A. certificate.

WHITE CLOUD.—A large, deep Jap., 8 inches in diameter; white on the edge, cream at the center, finishing almost pure white.

WM. TURNER.—This variety has created a sensation as exhibited at several shows. Makes a perfect ball of the purest possible white and as such will displace Merza and all others of that character on the exhibition table.

WHITE BONAFFON.—Color pure snow-white. The flower forms a perfect ball when in full bloom. Is a dwarf grower.

YELLOW WM. TURNER (1916 Novelty).—Same as Wm. Turner, its parent, except that it is a beautiful lemon yellow. A monster.

YELLOW EATON.—Bright yellow sport from Timothy Eaton. Considered better commercially than its parent. Good for all purposes.

Improved Hardy Garden Chrysanthemums

Splendid collection in Red, White, Pink, Bronze and Yellow. Both pompons and singles. **Price, not labeled, 10c each; \$1.00 per doz.; \$6.00 per 100.**

Geraniums

DOUBLE AND SEMI-DOUBLE VARIETIES

New and Scarce Sorts, 10c each; \$1.00 per doz. Not labeled, 15 for \$1.00.

ALPHONSE RICARD.—Large, semi-double flowers, often measuring two inches in diameter, borne in enormous trusses, on long flower stems. Continue in bloom the entire season.

BEAUTE POITEVINE.—Conceded to be one of the best semi-double bedders among the light salmon shades. The color is a beautiful shade of shrimp pink, delicately shading to white.

DOUBLE GEN. GRANT.—A vigorous grower, free blooming, splendid foliage, large trusses, color intense orange-scarlet.

EDMOND BLANC.—One of the most handsome and brilliant Geraniums in the cerise shade; the color is a bright carmine shaded around the white eye, and on upper petals with bright scarlet.

HELEN MITCHELL.—By all odds the most brilliant and finest scarlet Geranium ever put on the market. The blooms are gigantic, the number of flower heads on the individual plant is remarkable.

JEAN VIAUD.—An attractive, bright, clear shade of mauve rose, fading to a distinct white throat. The flowers are large and trusses enormous, sometimes measuring six inches in diameter

LA FAVORITE.—One of the finest double whites in this class; pure in color. Unsurpassed as a white bedder.

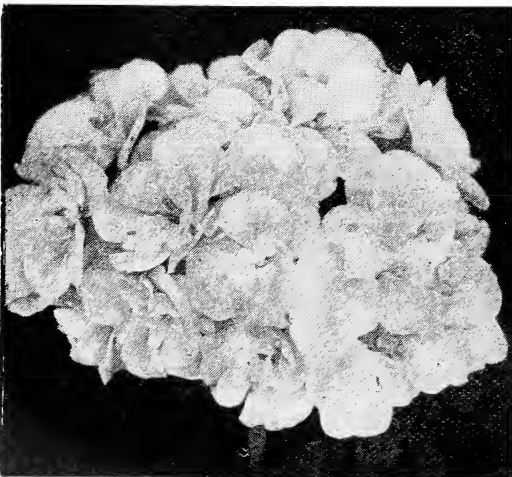
MARQUISE DE MONTMORT.—Deep crimson-carmine; a very novel and beautiful shade.

MISS F. PERKINS.—An exquisite shade of deep rose pink with a distinct white throat; large, handsome flowers.

MME. JAULIN.—Color delicate peach pink, shading to a shade of Daybreak pink in the center.

MME. LANDRY.—A distinct salmon pink, with a slight shading of scarlet; habit semi-dwarf, vigorous, broad, heavy deep zoned foliage. It has all the best points of a Bruant Geranium.

MRS. LAWRENCE.—This is, without exception, the finest geranium of this color that we have ever seen; clear, healthy foliage; splendid dwarf, compact habit of growth; wonderfully free in flowering; indispensable as a pot plant, being strongly recommended for winter blooming. The color is an artistic shade of bright satiny salmon-pink, slightly tinged white.



La Favorite



Jean Pabon

M. ANATOILE ROSELEUR.—A most beautiful shade of deep rose pink, rivaling in beauty and freshness the color of the Paul Neyron rose. The flowers are large, semi-double, showing a distinct white center, enormous trusses, borne on long stems well above the clean extremely handsome foliage.

S. A. NUTT.—This is a standard dark red geranium, more generally used than any other, both as a pot plant and for bedding. Brilliant deep scarlet, with maroon shading.

SINGLE VARIETIES

GRANVILLE.—A fine bedding variety, with large flower trusses. The color is a clear pink. One of the best.

JEAN PABON.—Robust and free-flowering, enormous trusses held well above the foliage; grand round flowers, blood red color, small white eye.

MRS. E. G. HILL.—The center of each petal is a soft light salmon, bordered with rosy salmon and veined deep rose. Frequently throws six petals. Resembles a rare begonia bloom more than a geranium.

NUIT POITEVINE.—A remarkably strong and vigorous variety, which we have no hesitation in recommending to those who wish a handsome dark single geranium; color beautiful rosy-purple; lower petals feathered rich scarlet; splendid habit and growth.

PAMELA.—Immense round flowers, with a large, pure white center shading through a maulated effect to a broad distinct outer margin of crimson-lake.

IVY LEAVED GERANIUMS

Price 10c each; \$1.00 dozen.

This class of the geranium is a most useful one. The leaves are ivy shaped, thick and glossy, excellent for vases, hanging baskets or to be trained on a trellis.

COL. BADEN-POWELL.—The flower is of enormous size, the largest among the Ivies. The color varies at times from pearl-white to soft blush, exquisitely beautiful

GARDEN GLORY.—Double. Fine deep scarlet; best red.

SOUV. DE CHAS. TURNER.—Deep bright pink, full and double; fine.

Scented Geraniums

10c each; \$1.00 per dozen.

APPLE SCENTED—There are few, indeed, who are not acquainted with this grand old favorite. A plant of it will fill a room with its delicious odor, which is precisely like the fragrance of apple blossoms.

LEMON SCENTED.—Small leaves strongly scented.

BALM.—Large flowers, upper petals light lilac, lower petals dark; large leaves with very strong fragrance.

Nutmeg.—Very fragrant.

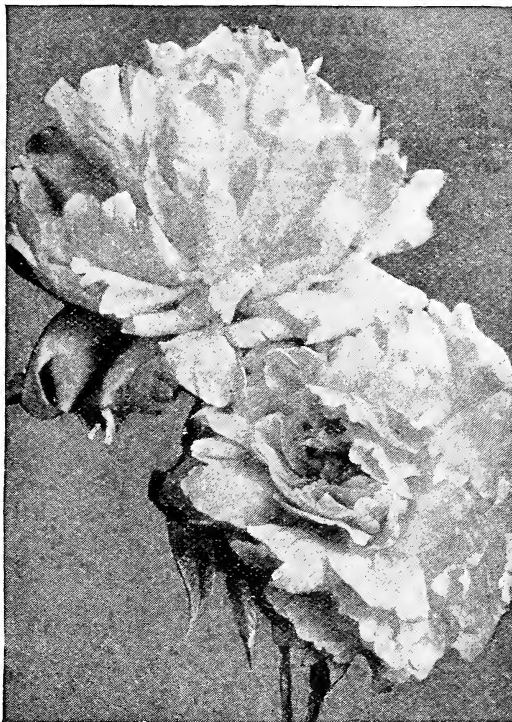
OAK-LEAVED.—Shape of oak leaf; almost black.

ROSE.—The old fragrant variety. Always a favorite.

STAGHORN.—Finely cut foliage; strongly scented.

Peonies

We offer Peonies in white, red and pink in the very best kinds. Peonies do best in rich, rather moist, loamy soil, and if plants are protected from the hot afternoon sun they will give excellent results. They should have a liberal supply of water at all times, especially when in bloom during April and May. Fertilize well with cow manure. Keep the ground well cultivated. If these few simple directions are carried out, the result will be most satisfactory. Plant during fall and early spring. **Prices: 50c each; \$5.00 per doz.**



White Peonies. 71

General Collection of Plants

ASPARAGUS

No other green mingles with cut flowers as well as Asparagus.

PLUMOSUS.—An excellent plant for window culture, and the lacelike texture of the foliage excelling that of Maiden Hair Fern in grace and daintiness. It is fine as a pot plant, and in floral decorations and sprays are almost indispensable. **Price 10c, 25c and 50c.**

SPRENGERI.—It is useful for cutting in sprays for fine cut flower work with roses, etc. Pretty decorative house plant. Used in decorations as, for example, in the decoration of mantels, nothing can equal it. **Price, 10c, 25c and 50c.**

TENUISSIMUS.—We cannot praise too highly this beautiful plant. If desired it can be grown like smilax or on a trellis; a great acquisition for decorative purposes or cut flower work. **Price, 15c and 25c.**

ACHILLEA ALBA (The Pearl)

THE PEARL.—It is a hardy perennial. Its flowers are perfectly double, pure white and are produced in great profusion throughout the summer. Valuable for bouquets and designs. Also unsurpassed for cemetery planting. **10c each; 7 for 50c; 75c per dozen.**

ACALYPHA (Chenille Plant)

SANDERI.—Beyond any doubt this is the most sensational new plant introduced for many years, and very ornamental. It is of strong, free growth, with large, dark green leaves, from each axil of which rope-like racemes of velvety crimson flowers, 1 to 2 feet long and nearly 1 inch thick, are gracefully suspended. **15c and 25c.** (See cut.)

TRICOLOR.—Foliage broad, mottled and blotched crimson scarlet and rose; always of bright color; neither fades nor burns during our warmest weather; bushy plant; fine bedder. (See cut.) **10c and 25c.**



Asparagus Plumosus.

ALTERNANTHERA

Price, 5c each; 50c per dozen; \$3.50 per 100.

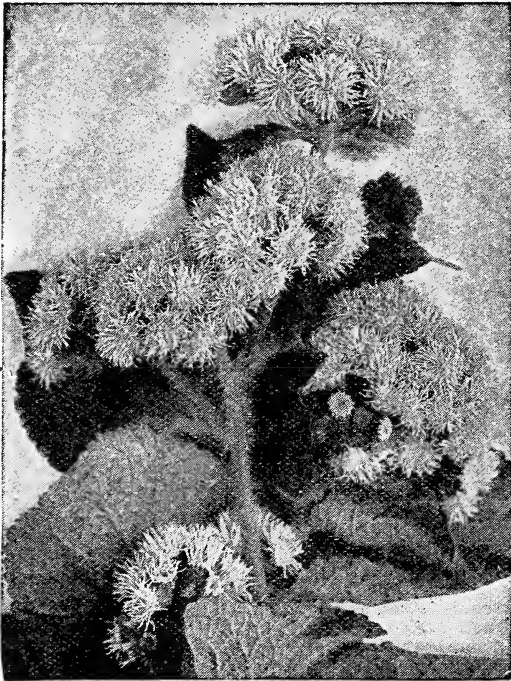
Beautiful dwarf plants of compact habit, growing about six inches high, and admirably adapted for edgings, beds or ribbon lines. Attractive and ornamental.

AUREA NANA.—Bright golden-yellow and green.

BRILLIANTISSIMA.—Crimson scarlet and pink. Its gorgeous color gives it the name of "Rainbow Plant."

ACHIMENES

Tuberous rooted. Treat as Gloxinias. Sky blue shading to lighter blue at center; fine for baskets; also purplish crimson; fine pot plant. Blooming size bulbs, 10c; \$1.00 dozen.



Ageratum.

ACHYRANTHES

ACHYRANTHES.—Yellow variegated crimson, also the deep solid crimson. Fine for baskets, vases and boxes. 5c; 50c doz.

ALOYSIA CITRIODORA

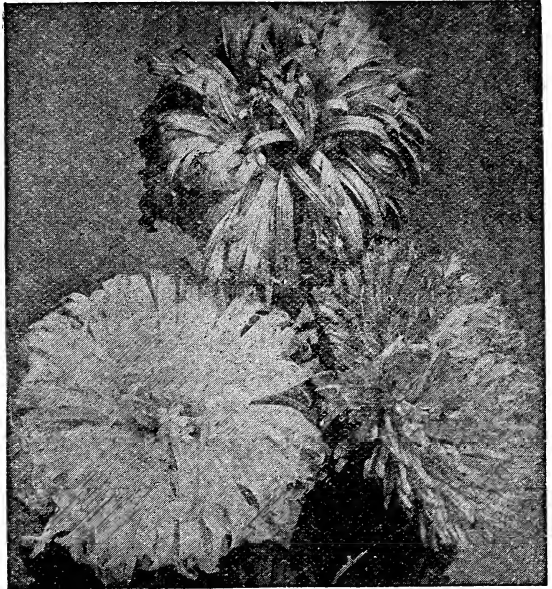
LEMN VERBENA.—A well-known plant, noted for its delightful fragrance; indispensable for bouquets. 10c.

AGERATUM

STELLA GUERNEY.—Compact, even habit; color a fine, deep blue, and literally a sheet of bloom the entire season; finely adapted to winter blooming in the window, garden or conservatory. Price 5c each; 6 for 25c; 50c per doz.; \$4.00 per 100.

ALYSSUM

Similar to the single variety, but far preferable. 10c each; 75c per doz.



Asters.

ASTERS

Separate or Mixed Colors, White, Blue, Pink and Crimson. 50c per doz.; \$4.00 per 100.

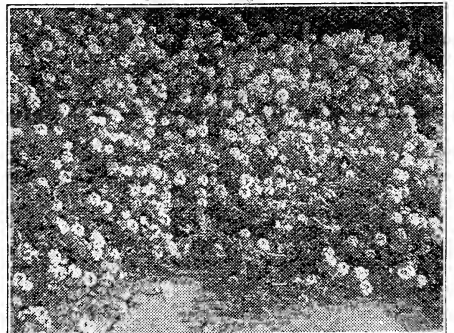
BEGONIAS—Flowering Varieties

ALBA PICTA IMPROVED.—Same as Alba Picta in every way except that it has larger foliage and larger flowers which are twice the size of the old one. This fine variety originated here with me and has been tested five seasons and proved worthy of a place. 10c.

ARGENTA GUTTATA.—An elegant begonia. Rich green leaves, spotted with silver; produces white flowers in bunches, on ends of growth stems; very handsome. 10c.

BEGONIA, IONE.—This beautiful little gem originated with me, and attracted more attention than anything in my houses last year on account of its beautiful compact form and pretty blooms. The foliage is a glossy-green, touched with orange, flowers pink—an entirely new shade of begonia. A true everbloomer, being entirely covered with blooms all the year. 15c.

(Begonias continued on next page.)



Alyssum.



Begonia.

Begonias — Continued

CORALLINA LUCERNA.—Immense trusses of bronzy red flowers. Blooms almost continually. This is the choicest of the flowering type. **15c and 25c.**

FEASTII (Beefsteak Begonia).—The old-fashioned "beefsteak" Begonia. Thick, rounded leaves of deep green, with red on reverse side. **15c and 25c.**

GLORIE DE CHATELAINE.—There is no equal to it as an outdoor bedder; very prolific bloomer. It is continually covered with large rosy-pink flowers, a good substitute for Cincinnati as a Xmas pot plant. **15c and 25c.**

GRACILIS LUMINOSA.—As the name implies, it is one of the most symmetrical and yet graceful plants we have ever known; very strong and robust, but still keeping its shape so as to make a very attractive winter house plant. Its foliage is rich glossy green, often shaded deep bronze. The flowers, when first opening, are bright cherry, changing to a clear coral red. **15c and 25c.**

MANICATA.—Large smooth, bright green leaves, hairy on stem and under side of leaf; large panicles of pink flowers high above the foliage; a strong grower and one of the best of recent introductions. **10c and 25c.**

McBETHII.—Foliage fern-like and distinct from other begonias. Flowers of waxy texture. **10c and 25c.**

METALLICA.—A fine erect-growing Begonia, with dark, rough leaves. The surface is a lustrous bronze-green with a metallic hue; flowers pure waxy-flesh. **10c and 25c.**

MME. DE LESSEPS.—A decided improvement on *B. Argenta Guttata*, the leaf being four times the size seen in that variety, while the silky texture is the same. It is beautifully spotted with silver. A very strong, free-growing variety; will succeed with ordinary care. **10c and 25c.**

NITIDA ALBA.—A strong growing, profuse blooming variety, producing immense panicles of pure white flowers, standing well above the foliage. **10c and 25c.**

OTTO HACKER.—In a class by itself. A strong vigorous grower, of fine upright habit, with large shining deep green leaves eight to ten inches long. Flowers bright coral red, borne in immense clusters eight to ten inches across. **15c and 25c.**

PRESIDENT CARNOT.—A strong growing variety of stiff, upright habit; foliage large, somewhat in style of *B. Rubra*, but more than twice as large; upper side deep green, under side purplish red; flowers beautiful coral red, in pendant panicles. **10c and 25c.**

RICHARDSONII.—Flowers white, foliage finely cut. **10c and 25c.**

RUBRA.—A magnificent Begonia. Bright, clear red in large trusses; beautiful, attractive, handsome glossy foliage; constant bloomer. **15c, 25c and 50c.**

THURSTONII.—A beautiful stately plant with remarkably handsome glossy foliage. The under side of the leaves is a rich purplish red, the veinings very prominent, while the face or upper side is a bronzy-green, shaded with crimson and olive, with a peculiar glossy metallic luster over all. Flowers rosy-white, in large clusters well above the foliage. **10c and 25c.**

BUDDLEIA

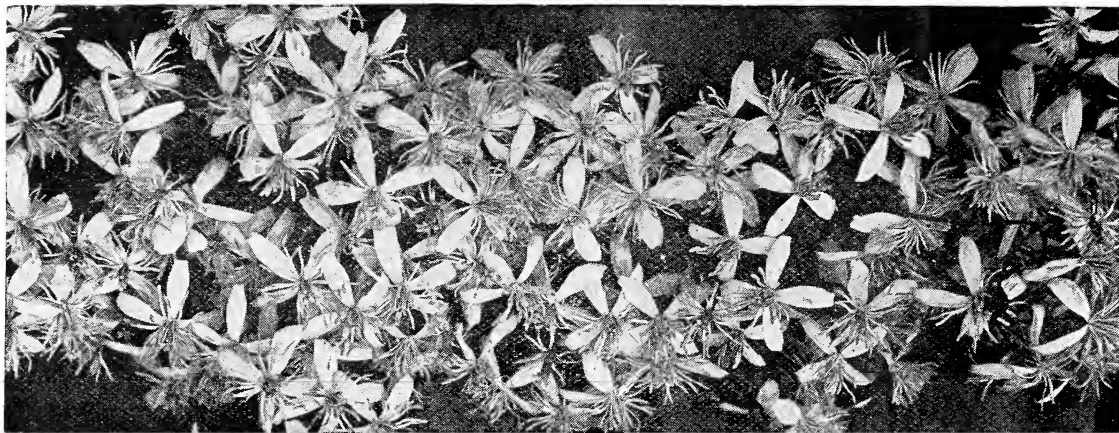
"BUTTERFLY BUSH" (Summer Lilac).—One of the most admired and sought after shrubs in the trade. Of quick bushy growth; when the lovely bloom-spikes appear in July, the shrub which had probably died down nearly to the ground during winter, is now a perfect specimen of about five feet; radiating a delightful perfume and glowing with the tints and flowershape of the Spring Lilacs. **10c; \$1.00 per doz.; 4-in. pot size, 25c; \$2.50 doz.**

BUY THE BEST

In buying plants it pays to buy the very best from growers that you know are reliable. Jackson's plants are the best and you will be satisfied with them.

THE EARLY ORDER

gets the first selection of plants, and therefore it is to your advantage to order as soon as you receive our catalog. The early orders get the stock while our stock is complete—**ORDER NOW.**



Spray of Clematis Paniculata

COLEUS

These make the showiest and cheapest bedding plants we have. There is such an endless variety in their color and markings that, with a little taste in planting varieties, the most gratifying results can be obtained at a trifling cost. They are easy of cultivation and make fine specimens in a very short time. Plants should be set about a foot apart, so that it is easy to figure out how many plants are needed. We grow them in large supply of best sorts. **5c each; 50c per doz.; \$3.50 per 100.**

TRAILING QUEEN COLEUS

An excellent variety for hanging-baskets and vases on account of its trailing habit; center of leaves fiery crimson surrounded with deep maroon; deeply serrated edges of bright olive-green. **5c each; 50c per doz.; \$3.50 per 100.**

YELLOW TRAILING QUEEN COLEUS

Same as Trailing Queen except center of leaves a bright yellow bordered with olive-green, with deeply serrated edges intermingled with yellow. **5c each; 50c per doz.; \$3.50 per 100.**

Coleus and Cannas

Make very beautiful flower beds either for foundation planting or circular beds in lawn. Plant the cannas in back with the Coleus in front of them.

Our Plants Are Well Rooted

CLEMATIS PANICULATA

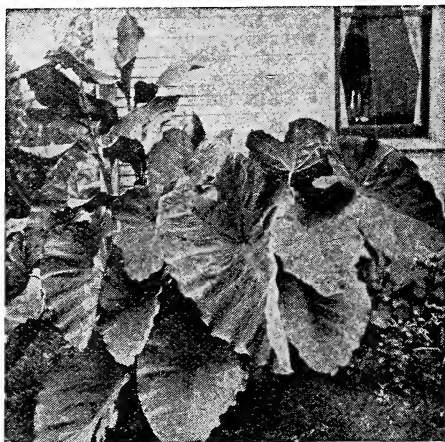
The flowers are pure white and are borne in great panicles or clusters of bloom, fairly covering the plant, so that it is a mass or sheet of fleecy white. The fragrance is delicious, resembling the English Hawthorne blossom. It begins to bloom early in August, when other hardy climbers are out of bloom. Grows quickly and strongly, reaching a height of 15 to 20 feet. Hardy in all sections of the country. There is no better hardy vine. **Strong plants, in pots, 15c each; 50c for 4; 2-year-old plants now in pots, 25c each; \$2.50 per doz.**

CALLAS

CALLA ETHIOPICA.—Lily of the Nile. Blooming plants, **\$1.00 and \$2.50 each.**

CALADIUM ESCULENTUM

ELEPHANT'S EAR.—One of the most effective plants in cultivation for the flower border or for planting out upon the lawn; it will grow in any good garden soil, and is of the easiest culture. **Price of bulbs, 25c and 50c each.**



Caladium Esculentum.

Cannas

In beds, borders or foundation plantings, the Cannas are indispensable on account of their beauty and low cost.



NEW DWARF FRENCH CANNAS

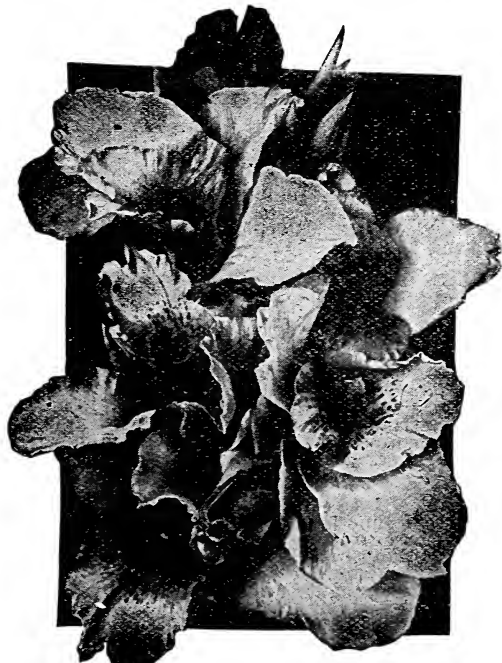
Few flowering plants combine so many good qualities as the modern cannas. They are the most important new addition to the floral world. Nothing equals their combination of bloom and tropical effect, and the low prices, for the very choicest, place them within the reach of all.

ALLEMANIA.—A splendid variety. The outer petals are bright scarlet with a broad yellow border, the inside colors being scarlet and dark red, beautifully mottled and variegated. Height 5 feet. Dormant roots. 10c each; \$1.00 doz. Started Plants 25c.

AUSTRIA.—Grows to 6 feet high, with leaves 15 to 18 inches broad. Flowers 6 to 7 inches across; color pure golden yellow; a vigorous grower. 10c each; \$1.00 doz. Started Plants 25c.

CITY OF PORTLAND.—3½ ft. Glowing pink, deeper in color than its parent, Mrs. Alfred F. Conrad; profuse bloomer. 15c each; \$1.50 doz. Started Plants, 25c.

EUREKA.—Our own introduction, and in our opinion the very best white-flowered Canna. The immense trusses of substantial flowers are borne upon very vigorous plants in greatest profusion. 4½ ft. 15c each; \$1.50 doz. Started Plants 25c.



King Humbert Canna

Cannas Form a Pleasing Contrast in Shrub Beds

GAIETY.—Reddish orange, mottled with carmine and edged with yellow. The tongue is yellow spotted with carmine. A magnificent, bright bedder. 10c; \$1.00 doz. Started Plants 25c.

HUNGARIA.—Flowers large, in good-sized trusses, freely produced. The color is a beautiful rose-pink, which has been compared to that of the Paul Neyron Rose. It impresses one with its refinement. 3½ feet. 15c each; \$1.50 doz. Started plants 25c.

KING HUMBERT.—Has flowers as large as the largest of the orchid flowering cannas. Bright orange-scarlet, streaked with crimson. Foliage is bronze with brownish-green stripes, large, thick and leathery. A strong, robust grower. Height 4 feet. 15c each; \$1.50 doz. Started plants 25c.

METEOR.—It is impossible to convey the full value of this magnificent bedding variety with its massive erect trusses of deep, blood-red flowers, produced with a freedom that leaves nothing to be desired in effectiveness. Unqualifiedly the best deep-red bedding Canna; 5 feet. 15c each; \$1.50 doz. Started plants 25c.

MRS. ALFRED CONRAD.—The best pink canna ever introduced and unsurpassed for planting either singly or in large beds. The exquisite salmon-pink flowers are of largest size and so freely produced as to keep up a superb showing for months. 4 feet, 15c each; \$1.50 doz.; started plants, 25c.

STATUE OF LIBERTY.—6 to 7 ft. Foliage bronze and half as large again as its nearest rival. Color, flame red. Price, 25c; \$2.50 doz.; started plants, 40c.

THE PRESIDENT.—The flowers are produced in immense trusses of the most brilliant red. It possesses all the good points of Fire Brand enhanced by extraordinary vigor and perfectly healthy foliage. 15c; \$1.50 doz.; started plants 40c.

WINTZER'S COLOSSAL.—Colossal indeed are the flowers and bloom-heads of this magnificent Canna. The effect produced by the vivid scarlet flowers is very striking. It is the largest-flowered Canna yet introduced, also the earliest, most persistent, and most prolific bloomer. 15c each; \$1.50 doz.; started plants, 25c.

YELLOW KING HUMBERT (Queen Helen).—This is a sport of the well-known bronze-leaved variety, but this sort has green foliage; makes an attractive, symmetrical plant, growing about 4 feet high, surmounted with masses of golden yellow flowers, dotted red; occasionally some will be streaked red. It is of strong, vigorous habit, and makes a splendid variety to bed with the bronze-leaved King Humbert where a combination of red and yellow is wanted. 15c each; \$1.50 doz.; started plants 25c.

CARNATIONS

Price 15c each; \$1.50 per dozen

The great improvement made in this grand race the past few years has directed popular attention to them until now they are exceeded by the rose alone in the number annually grown for cut flowers. Our collection contains only sorts of approved merit and our plants are in the finest possible condition.

BEACON.—Fine scarlet variety, in front of the class of "reds." The color is brilliant and a variety of strong, sturdy growth; a very free blooming sort.

ENCHANTRESS.—Just what the florists are looking for—light pink Lawson. It is large in size and longer stemmed; a beautiful shade of light pink, deepening towards the center. Immense, attractive flowers of fine form and exceptional keeping qualities. The growth is ideal; very healthy, vigorous constitution.

ROSE PINK ENCHANTRESS.—A pure clear pink flower without markings, having the extra large size and other good qualities of Enchantress.

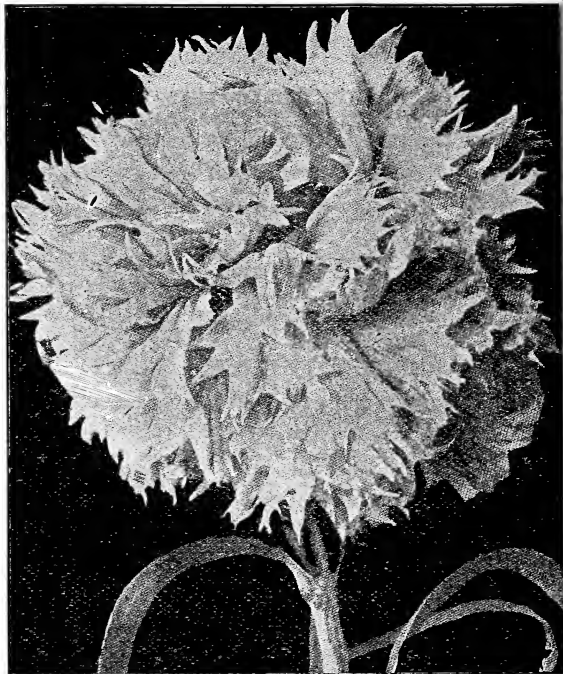
WHITE ENCHANTRESS.—This needs no further description than to say that it is just what its name implies, a white sport from Enchantress.

CINERARIA—White Leaved

DUSTY MILLER.—These are called "Dusty Millers." Fine for bedding, ribbon-beds and margins; prized for their beautiful downy, silvery foliage; half hardy perennials. **10c each; 3 for 25c; 75c per doz.; \$5.00 per 100.**

CISSUS DISCOLOR

A well-known climber, with leaves shaded dark green, purple and white, the upper surface of the leaf having a rich, velvet-like appearance. In a warm place it is an extremely handsome and notable plant. Eight of these vines, planted as



Carnation

late as July 15th, completely covered my veranda and was the admiration of the whole town. **Price, 15c; \$1.50 per doz.**

Jackson's Dahlias

Plants ready May and June.



Ayesha Dahlia

SELECT DAHLIAS

ATLANTA (Cactus).—Creamy, white, extra large flower. **Bulbs, 25c; plants, 10c.**

A. D. LIVONI (Show).—Beautiful, soft pink, with quilled petals. The standard pink for cutting. **Bulbs, 25c; plants, 10c.**

AYESHA (Show).—A wonderfully handsome, clear light yellow dahlia, that has attracted great atten-

tion. The flowers are of immense size; beautiful regular form, with large shell like petals, and borne on long stiff stems. The plant is a strong, vigorous grower and a most profuse bloomer. Excellent for garden, exhibition and commercial purposes. **Price, 35c each; plants 15c.**

ATTRACTION (Cactus type).—The real flower and the habit of the plant must be seen to fully appreciate this splendid variety. The flowers measure invariably over 6 inches in diameter and are made up of gracefully twisted petals still uniform in shape; the exquisite shade of pink is just what the retail trade demands. **Roots, 50c; plants, 25c.**

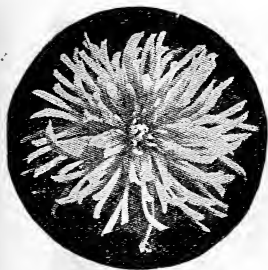
BLACK BEAUTY (Show).—A grand, dark maroon of distinct form. **Bulbs, 25c; plants, 10c.**

BON TON (Show).—Rich garnet; very free. **Bulbs, 25c; plants, 10c.**

BIANCA (Hybrid Cactus).—A magnificent new hybrid cactus that is in a class by itself, of giant size and splendid form. The color is white, suffused and overlaid an exquisite soft mauve pink. A strong vigorous grower of splendid habits and a very free bloomer. The gigantic flowers are facing and held erect on long stiff stems. **Plants only, 25c.**

BREAK O'DAY (Hybrid Cactus).—A new giant flowered Dahlia that should be in every collection. Its immense size is relieved by a beautiful irregular formation and its soft color. A delicate clear sulphur yellow, tinting to sulphur white at the tips. The petals are of great substance, illuminated by a satiny sheen, giving the flowers a waxy appearance. A strong vigorous grower and free bloomer with long erect stems. An acquisition. **Plants only, 25c.**

Dahlias—Continued



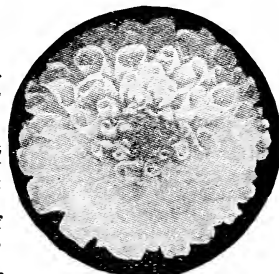
Edith Carter.

COUNTESS OF LONSDALE (Cactus).—A pleasing blend of salmon, pink and amber; the freest bloomer of all the Cactus Dahlias. **Bulbs, 25c; plants, 10c.**

DOROTHY PEACOCK (Show).—Large, perfect shaped flowers of a bright sea-shell pink color; very early, free and continuous blooming. **Bulbs, 25c; plants, 10c.**

DELICE (Decorative).—A beautiful new shade of pink; large flowers on long, rigid stems. **Bulbs, 35c; plants, 15c.**

EMILIE (Show).—Rosy lavender, white at base of petals; excellent for cutting. **Bulbs, 25c; plants, 10c.**



Mrs. Roosevelt

EDITH CARTER (Cactus).—A soft bright yellow, suffused and heavily tipped bright rosy carmine. Of fine form, good size and produced freely on long stiff stems. An unusually lovely variety. The plant is an early, free and continuous bloomer. **Plants only, 25c.**

GEORGE WALTERS (Hybrid Cactus).—Another large flowering Dahlia with extra strong stems. Color, salmon and shrimp pink shades. **Plants only, 25c.**

GEISHA (Peony).—A combination of scarlet and gold, so beautifully arranged as to make one wonder as to the possibilities of Nature. The flowers vary, none being marked exactly alike. **Bulbs, 50c; plants, 25c.**

GOLDEN GATE (Cactus).—Novelty of 1914. One of the very best Dahlias ever introduced; a grand flower of immense size, measuring from 7 to 9 inches in diameter. Color a deep golden yellow, overlaid bronze. **Bulbs, 25c; plants, 10c.**

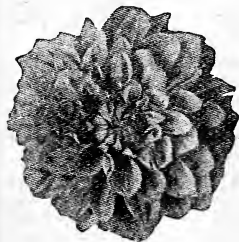
GOLDEN WEST (Decorative).—The finest Dahlia every shown, clear, yellow, large elegant flower, on long stems. **Bulbs, 25c; plants 10c.**

HORTULANUS FIET (Decorative).—A colossal flowered variety with blooms over eight inches in diameter, of the most delicate shade of shrimp pink, the tip of each petal barely touched with gold. The entire flower has a suffusion of delicate tints of red and yellow; which gives a glow yet softness of color difficult to describe. Much admired by all who see it. **Bulbs, 35c; plants, 15c.**

JACK ROSE (Decorative).—A brilliant crimson-red with fiery tones in the center of the flower, the whole overlaid with a soft violet-maroon. **Bulbs, 25c; plants, 10c.**

KAISERIN AUGUSTA VICTORIA (Decorative).—The earliest and one of the best white decorative Dahlias; large flat, open flowers of purest white on stout, erect stems. **Bulbs, 25c; plants, 10c.**

KALIF (Cactus).—A truly majestic flower, frequently measuring 8 to 9 inches in diameter; a perfect Cactus form, in color a pure scarlet. **Plants, 25c.**



Minnie Burgle.

PERLE DE LYON (Decorative).—A most valuable white Decorative Dahlia, and one of the best whites of any class for cut flower purposes; its flowers are of good size, and held erect on long, stiff, wiry stems. **Bulbs, 25c; plants, 10c.**

QUEEN MARY (Decorative).—Exquisite New Decorative Dahlia. This is a stronger grower than Delice. A large flower with full, rounded center. The color is a soft shade of pink. **Plants only, 50c.**

PRINCESS VICTORIA (Show).—A sterling novelty, being the earliest and freest-flowering primrose-yellow; never produces an imperfect flower and is in bloom early and late; long, stiff stems; fine for cutting. **Bulbs, 25c; plants, 10c.**

L. KRAMER PEACOCK (Decorative).—In this new decorative we have an ideal white. The flowers are pure white of splendid form, with slightly cupped petals, something of the shape of Aylesa and of the greatest substance, being thick, leathery and keeping longer than any other white. **25c each; plants, 10c.**

MINNIE BURGLE (Decorative).—Another year has again demonstrated that this is the best red Dahlia in the world. The plant is a strong, vigorous grower, with dark glossy foliage and an early free and continuous bloomer. The flowers are of large size, perfect form and produced on long stiff stems. The color is a vivid vermilion-red. It has no faults, and requires no special care or attention. **25c; plants, 10c.**

MARJORIE CASTLETON (Cactus).—The best standard pink cactus Dahlia. It is much softer than most of the pinks, and is an early continuous bloomer. The color is soft pink, tinting lighter toward the center. It is a very rapid grower, with good stems and keeps well after cutting. **35c; plants, 15c.**

MRS. J. GARDNER CASSATT (Decorative).—A large-flowered variety of elegant shape, mauve-pink of a shade that is very pleasing in a Dahlia; a fine cut flower. **Bulbs, 25c; plants 10c.**

MRS. ROOSEVELT (Decorative).—One of the quaint flowered type, with broad flattish flowers which keep well. An exquisite suffusion of white and shell pink. **Bulbs, 35c; plants, 15c.**

MAID OF KENT (Decorative).—The most constant in variegation, yet it varies somewhat. Rich crimson, tipped snow-white. **Bulbs, 25c; plants, 10c.**

OREGON BEAUTY (Decorative).—A brilliant gorgeous flower that attracts much attention on account of its rich color, an intense Oriental-red with golden sheen and garnet suffusion. Produces its large flowers on long stems in the greatest profusion. A splendid garden variety. **Bulbs, 25c; plants, 10c.**

PATRICK O'MARA (Decorative).—The flowers are eight inches or more in diameter and borne on long, strong, erect stems. They are firmly set at right angles close to the stem. The color is an unusual soft and pleasing shade of orange-buff, slightly tinged with Neyron rose. An autumn shade that will be in great demand. **Plants only, 50c.**



Patrick O'Mara

Dahlias—Continued

SUNSET (Show).—Primrose yellow, edged and tipped rose and lavender. Fine and free bloomer. **Bulbs 25c; plants, 10c.**

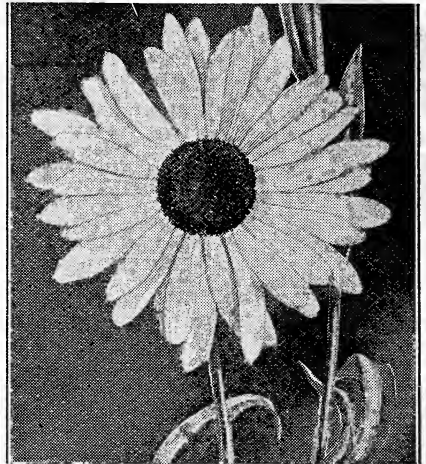
SYLVIA (Decorative).—White shading to soft pink on the outer petals. Splendid substance, giving it an unsurpassed keeping quality. **Bulbs, 25c; plants, 10c.**

WM. AGNEW (Decorative).—The most popular standard red. **Bulbs, 25c; plants, 10c.**

YELLOW KING (Hybrid Cactus).—One of the largest of all cactus Dahlias, being of gigantic size and of the finest new cactus. Color light yellow, tinting to cream at the tips, giving it a most pleasing effect. The immense flowers are borne on long stiff but slender stems. The plant is a strong and sturdy grower and a free and continuous bloomer under all conditions, making it one of the most reliable for all purposes. Should be in every collection. **Plants only, 50c.**

NEW SHASTA DAISY

In growth the plants are as strong as a common field daisy, very tall, well branched with huge white flowers borne in profusion on long stiff stems. The flowers are pure white with gold center, petals very long and center soft and velvety. It is a very pretty hardy plant and one of the novelties that has come to stay. **10c; 6 for 50c; \$1.00 per dozen.**



Shasta Daisy.

JACKSON'S FERNS

The popularity of ferns has increased wonderfully. In the past few years I have added greatly to my collection, which is now the largest in the South. Ferns are now indispensable in all choice table and house decorations. Where there can be a little moisture and shade all varieties listed will do well. They delight in a good leaf mold. Good drainage must be provided, as stagnant water allowed to remain about the roots is fatal to ferns as well as all other plants.



Adiantum Croweanum Fern.

ADIANTUM CROWEANUM (New).—This is not only the best and most profitable Maidenhair to grow for cutting but it is also the best variety to recommend to the retail buyers for house culture, it standing the dry atmosphere of the room better than any variety we have yet tried. **Strong 2½-inch pot plants, 25c; 4-inch, 50c.**

A. CUNEATUM.—The Maidenhair. This variety is a general favorite. **25c and 50c.**

A. CAPILLIUS VERNERIS.—Handsome, hardy Maidenhair Fern. **2½-inch plants, 15c; strong 3-inch plants, 10c to 50c, according to size.**

SELANGINELLAS (Moss Fern)

A beautiful upright-growing moss, with numerous feathery stems branching from the base and forming a dense tuft. Well grown plants attain 12 to 18 inches in height and a corresponding diameter. We know of no moss superior to it and it is exceedingly appropriate for table decoration. **Strong pot plants, 25c.**

THE BOSTON FERN AND ITS VARIETIES

NEPHROLEPIS BOSTONIENSIS (The Boston Fern).—The fronds grow 6 feet long. It has been commonly called the Boston Fern. **Nice young plants, 10c; 3-inch pots, 25c; 4-inch pots, 50c; 6-inch pots, \$1.00 to \$2.50 and up.**

NEPHROLEPIS NORWOOD.—The most beautiful form of Nephrolepis to date; graceful, compact and symmetrical; best of all the ostrich plume types; a vigorous, healthy grower. All are invited to inspect it at our greenhouses. **Strong 2½-inch pot plants, 20c; 4-inch, 35c up to \$3.00.**

NEPHROLEPIS WHITMANI.—In this we have a most valuable Nephrolepis of the Ostrich Plume type. Not only is it of more dwarf and compact habit than the N. Elegantissima, but the plume being more deeply divided, gives the plants a more graceful appearance. **Strong 2½-inch pots, 10c; 3-inch pots, 15c; 4-inch pots, 50c; and 6-inch pots, \$1.00 to \$1.50.**



Boston Fern

Boston Ferns — Contin'd

NEPHROLEPIS SCOTTI (The Dwarf Boston Fern).—This is the best house plant of all the Sword Ferns, identical with the celebrated Boston Ferns, except that it is smaller in all its parts, more compact and makes a nice specimen in a short time. **2 1/2-inch pots, 15c; 3-inch pots, 25c; 4-inch pots, 50c.**

NEPHROLEPIS MACAUII (New).—One of the grandest ferns of late introduction; far superior to any we have yet grown; it stands erect, a wonderful fern for the home. **2 1/2-inch pots, 25c; 3-inch, 50c; 4-inch, 75c.**

Large specimen plants, **\$1.50 to \$5.00.**

NEPHROLEPIS VERONA (New).—Ostrich Plume. This is far superior to Whitmani; a wonderful fern that we strongly recommend. We have had it on trial for one year and it pleases us very much. (Give it a trial.) **2 1/2-inch pots, 25c; 3-inch pots, 50c; 4-inch pots, \$1.00.**

HIBISCUS ROSA—SINENSIS

These plants are becoming very popular as bedding plants, being almost continually in bloom and very effective, either planted out or cultivated in pots. The greater the heat the more numerous and beautiful are the large and magnificently colored flowers.

PEACHBLOW.—This is one of the finest plant novelties offered in recent years. The flowers are double and from 4 to 5 inches in diameter, and of a charming, rich, clear pink color with a small deep crimson center. It blooms abundantly and continuously even on small plants; may be easily wintered in greenhouse or dwelling. **15c, 25c and 50c.**

JOAN.—Double yellow. **15c, 25c and 50c.**

RUBRA.—Double red. **15c, 25c and 50c.**

CRIMSON PEACHBLOW.—A sport from Peach-blow. Identical with the parent except in color, which is a beautiful cerise red. Strong grower and wonderfully free bloomer. Cropped out in 1911 in my house No. 6. I have the only plants in existence. **15c, 25c and 50c.**

CRIMSON EYE.—A remarkably showy and handsome hardy plant. It is a robust grower. The color is of the purest white with a large spot of deep velvety crimson in the center of each flower. It will succeed anywhere and is perfectly hardy in all sections of the country. **10c and 25c.**

SOUTHERN BEAUTY.—A wonderfully, beautiful herbaceous Hibiscus, a remarkable bloomer and so fine as to be generally cultivated by all. It forms pyramidal-shaped specimens, lower branches slightly reclining, clothed with five-cleft leaves, segments toothed and crimson margined, presenting a fine appearance. In open ground it is covered with handsome deep crimson flowers, shaded darker to throat till almost black. When pot grown it begins to bloom in thumb-pots while not more than 3 inches high. Entirely hardy and of the easiest culture. **10c, 25c and 50c.**

NEW FRENCH VARIETIES—HARDY

AVALANCHE.—Large corymbs of pure white flowers; a splendid advance on all white sorts. **25c and 50c.**

E. G. HILL.—Trusses of immense size; color a most pleasing shade of pink which does not fade; growth vigorous. **25c and 50c.**

OTASKA.—The well-known garden variety, producing immense heads of bright pink flowers. **25c and 50c.**

PANICULATA GRANDIFLORA.—Continues to be one of the best and handsomest hardy ornamental shrubs grown. It blooms finely the first year and gets better and grows larger with age. The flowers are pure white. In great demand for lawn, cemetery and park planting. **50c and 75c each.**



Southern Beauty



Crimson Peachblow



Whether your flower garden is to be large or small, choose your plants carefully. We shall be glad to help you make selection.

HELIOTROPES

Below we give a list of choice and distinct varieties of this popular and indispensable plant, so much valued for its fragrant flowers and successive bloom. **Price 10c each; \$1.00 doz.**

QUEEN OF THE VIOLETS.—Deep violet purple, with large almost white center; very fragrant; has recently become very popular.

MAD. BRUANT.—Plant dwarf and exceedingly free bloomer. Immense panicles of very large flowers, rich purple with a large white eye.

SNOW WREATH.—The nearest approach to pure white; large trusses, compact growth.

IMPATIENS SULTANI

This is one of the most distinct and beautiful pot plants in winter or for summer bedding, of compact, neat habit, and always in bloom; the flowers are bright and contrast finely with the glossy, lovely green leaves. We have this plant in all shades of pink, salmon pink, delicate apple blossom pink, also purple, near white, variegated white and salmon and bright orange scarlet. **Price 10c each; \$1.00 per doz.**

PARLOR IVY

A very rapid grower, with smooth, glossy light green leaves; fine for baskets, vases, etc. **Price, 10c; 7 for 50c; 75c doz.**

JASMINE

GRANDIFLORUM (Catalonian Jasmine).—Flowers pure white, star-shaped and very fragrant. Blooms from October to May. **15c and 25c.**

LANTANAS

One of the best summer flowering plants for our climate; equally fine in dry or wet weather. There are few bedding plants that bloom more continuously or afford a greater variety of color. **Price 10c each; \$1.00 per doz.**

COUNTESS MORNLY.—Flowers lemon color.

FAVORITE.—Yellow, merging into crimson.

FRANCINE.—Flowers large and rosy lilac.

JAVOIL.—Purest white; very large flowers.

HARKETT'S PERFECTION.—A new variety, with beautiful flesh and yellow flowers, and golden variegated foliage.

MRS. MCKINLEY.—This charming new weeping Lantana is admirable for baskets, vases or pots; but it is, if possible, more beautiful still when bedded out. The flowers are borne in elegant clusters; in bloom all the time.

OXALIS (Ortgiese)

A new variety growing a foot or more in height. The upper side of the leaf is rich olive green, the under side purple. This is not a bulbous rooted variety. Flowers yellow; a constant bloomer. **10c and 25c.**

UMBRELLA PALM

One of the most useful of our house plants. It is exceedingly hardy in constitution, and if given plenty of water will thrive where others would die. Being semi-aquatic in its nature, it is very pretty when grown in a bowl and kept filled with water above the soil. **15c, 25c and 50c.**

THE WONDERFUL GIANT MOON-FLOWER

(*Ipomoea Maxima*)

"A Giant in Growth and Flowers, and Wonderfully Fragrant"

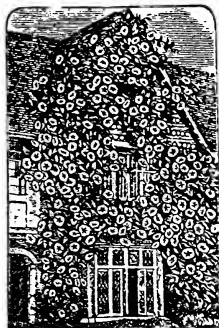
This grand new Moon-flower is a decided improvement over the well-known variety *Ipomoea Grandiflora*. The flowers are more than twice the size of the old variety, oftentimes measuring from 6 to 7 1/2 inches across, and are produced in such wonderful profusion that they completely cover the vine with a veil of glistening white. Its growth is very rapid when planted in good rich light soil, nothing to equal it as a tender vine for porch and lattice shading. (See cut.) **15c each; \$1.50 per dozen.**

MOON-FLOWER

(Price 10c each; \$1.00 per dozen)

IPOMOEA GRANDIFLORA.—Large Moon-flower, or Evening Glory. Flowers pure white, 4 to 5 inches in diameter. Very rapid grower and free bloomer.

IPOMOEA LEARII.—The Blue Moon-flower. This is a grand companion for the white variety. It is similar in all respects except the color, which is a lovely satin blue with crimson bars. When grown with white the effect is grand.



At Left
The Giant
Moonflower



At Right
Cissus Discolor
(See page 22)



Giant Pansies.

PANSIES—GIANT MIXED

The ground must be rich, using only well decayed manure, and avoid planting in a dry, exposed place. They delight in partial shade and moisture. **5c each, 50c per doz., \$3.50 per 100.**

PLUMBAGO

These Plumbagoes are desirable on account of their beautiful shades of flowers, which they produce abundantly the whole summer. They stand the sun admirably.

CAPENSIS.—Light blue; very free-flowering. **10c each; \$1.00 per doz.**

CAPENSIS ALBA.—The exact counterpart of *Capensis* except in color, which is a creamy white. It is constantly in bloom through the season. **10c each; \$1.00 per doz.**

DOUBLE PETUNIA

The collection offered this season is particularly rich in color. Flowers of the largest size; fine in form and double. **Price 10c each; 12 for \$1.00.**

PETUNIA, PINK BEAUTY.—Large, clear pink.

GEM.—Variegated, white and crimson.

MAJESTIC.—Rich deep purplish crimson.

SEAFOAM.—Best of double whites.

RUSSELLIA MULTIFLORA

Profuse bloomer, a well-known plant, bearing a perfect shower of bright coral-red flowers; the most dainty basket plant extant. **10c each; \$1.00 per doz.**

Get acquainted with

JACKSON'S ROSES

by ordering our special Rose collection on Page 2. A real bargain in high grade plants.

**Salvia Splendens.****SALVIA**

Excellent summer blooming plants, especially brilliant in the fall months; fine for bedding and of easy culture. **Price, 5c each; 50c per doz.; \$3.50 per 100.**

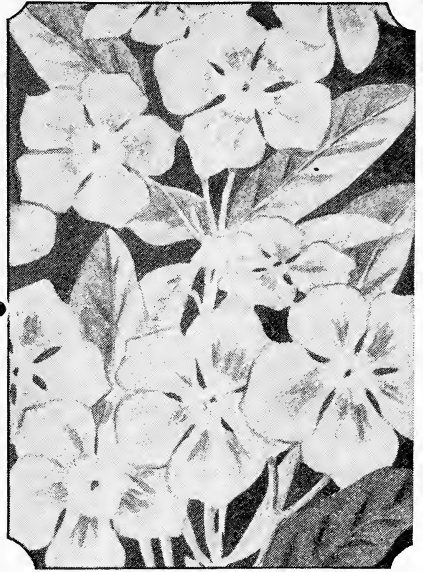
NEW DWARF SALVIA BONFIRE.—Forms a compact bush completely covered with rich scarlet flowers all summer; grows 12 inches high.

SPLENDENS (Scarlet Sage).—Long flower spikes of the most dazzling scarlet.

AMERICA.—A new bedding or pot variety that will supersede all other dwarf kinds on all-round merit. The growth is vigorous and healthy, but dwarf and compact. It commences flowering early and continues a mass of glowing scarlet until heavy frosts occur. Can also be flowered in pots from Christmas on. **10c each; 7 for 50c; 75c doz.**

WANDERING JEW

Two distinct varieties. Green striped white or cream and bronze striped pink and silver. Also plain green. **10c each; 7 for 50c; 75c doz.**

**Tuberose.****Vinca Periwinkle.****VINCA**

MAJOR (Variegated-Leaved).—An elegant slow-growing, climbing vine, glossy green leaves, widely bordered with creamy white; always bright and pretty; extra nice for pots, vases, baskets, window boxes and rockeries; good everywhere; always wanted. **Price 10c each; 12 for \$1.00.**

PERIWINKLE.—Everblooming bedding plants, flowers phlox shaped. In separate colors, rose or white. **10c; \$1.00 per doz.; \$7.00 per 100.**

MAMMOTH VERBENAS

With the exception of the geranium the verbenas is the most popular and useful of our bedding plants. Colors run from the purest white to scarlet and maroon through all shades of blue to deepest purple; some have white or cream centers; others are striped, etc. **5c each; 50c per doz.; \$3.50 per 100.**

TUBEROSE

DOUBLE PEARL.—Dwarf sort. **10c each; 75c doz.**

**JACKSON'S
PLANTS**

will produce beautiful blooms and colorful foliage. The result of careful growing.

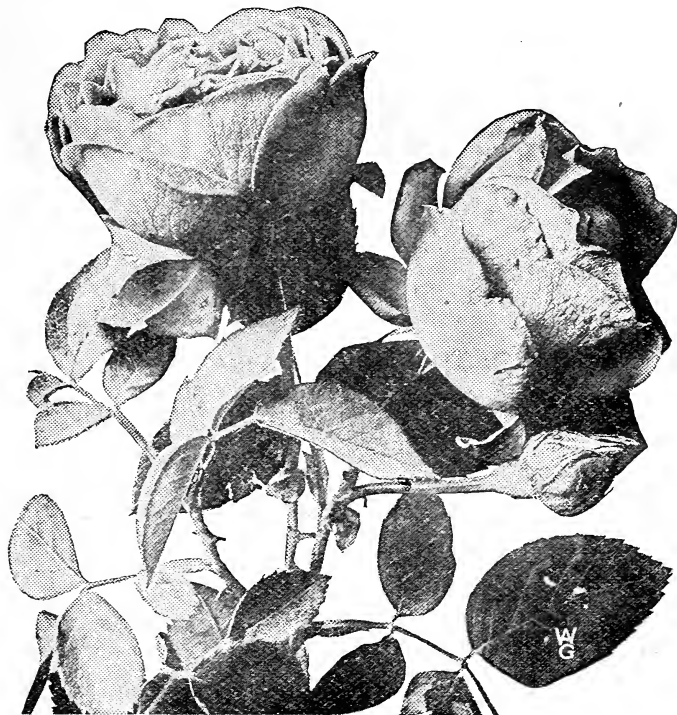
SANSEVIERA ZEALANICA

A new decorative plant of great beauty and value. Splendidly adapted for the decoration of drawing rooms or halls, as it stands drought or dust with impunity and requires scarcely any water. The leaves grow to a length of 3 to 4 feet and are beautifully striped crosswise with variegations on a dark green ground. **10c, 25c and 50c.**

**NEW SEMI-DWARF ANTIRRHINUMS
(Snapdragon)**

This type is becoming very popular for bedding purposes owing to their dwarf and compact habit of growth; height about 18 inches. **10c each; \$1.00 per doz.**

**Verbenas.**



Mad. Camille, (see page 7)

Cut Flowers and Design Work

In design work and cut flowers we are better than ever prepared to care for your wants. During the past two years, when stock has been so high and scarce, we have taken care of every retail order sent us. We carry on hand a large stock of seasonable cut flowers. Frequently, persons are undecided what to order and at such times you may leave the selection to us, stating what you wish to use them for and the price you wish to pay.

HOW TO ORDER. Give us as much time as possible. Do not be afraid to order even a week or two ahead. Then you are sure of getting just what you want.

Please notice that orders for early morning shipment must be in the night before. Our postoffice closes at 7 p. m.

When time is limited, **always** order by telephone or telegraph. **Don't trust the mails,** trains are often late and we often do not receive orders on time. If order by mail is for immediate shipment, please affix a special delivery stamp.

HOW WE SHIP. All cut flowers, designs, corsages and bouquets, packed to carry long distance safely, either winter or summer.

TERMS. All cut flowers and design work strictly cash.

RESPONSIBILITY. While we exercise the greatest care to have all flowers reach their destination on time, and will not ship unless we are reasonably sure they will reach you on time, we can not be responsible for delays in trains, wrecks, or express agents' negligence. Should your flowers reach you too late, accept them under protest, do the best you can with them. If for a funeral, lay them on the grave, we will share the loss with you and take care of any claim against express company.

A Supply of Handsome Gift Plants Always in Stock.

Vegetable Plants

ALL POT GROWN

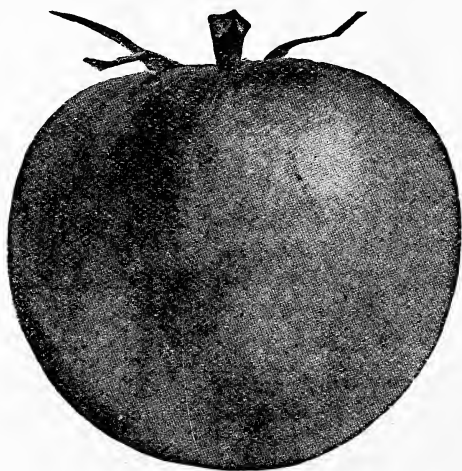
EGG PLANTS—Black Beauty, from 2 1-2 inch pots, 5c each, 50c doz.

PEPPERS—Chinese Giant, from 2 1-2 inch pots 50c doz.

Glory or Pimento, 5c each, 50c doz.

Tomato Plants

From 2 1-2
inch pots
5c each,
50c doz.,
\$3.50 per
100



Ponderosa
Dwarf Stone
Trucker's
Favorite

WE DO NOT SEND OUT ANY REPRESENTATIVES

Spring 1923

J. E. JACKSON

PIEDMONT GREENHOUSES
Gainesville, Georgia

The Largest Rose Growers in the South

M. O. Cash
Ex. M. O. Stamps
Draft Total
Opened by Date
Addressed by Packer
O. C.

DO NOT WRITE IN THIS SPACE

Name
Street and No.
Post Office
County State
Express Office
How to be sent (Mail or Express)
Date of Order

Amount enclosed:

P. O. Order \$
Draft on N. Y. or Atlanta \$
Cash (in registered letter) \$
Check, including exchange \$
Cash (by Express) \$

Express Money Order \$
Money sent in either of the above ways is at my risk; if sent in any other way, it is your risk.

Please fill in the above blanks with your full name, address, etc., plainly written, and always state in what way plants are to be sent. Carry out the Catalogue price of each item and carefully add up the full amount. Use this sheet for ordering only, and do not write letters on it. A careful observance of these directions will oblige me, and enable me to fill order with greater accuracy and dispatch. Always sign your name the same and plain.

Should we be sold out of articles ordered, we will send others equally good or better.

Do not send personal checks on your local bank unless you add exchange, as it costs me 10c to collect each one, except on Atlanta banks.

Table with 3 columns: Quantity, ARTICLES WANTED, PRICE. The table contains multiple rows of dotted lines for data entry.

Terms of Sale

3

ORDER EARLY.—Our aim is to execute all orders as soon as received, but during the rush season in the spring, delays are sometimes unavoidable, which can be partly overcome by our patrons anticipating their wants and ordering early. We give every order, no matter how large or small, prompt and careful attention.



Rose Garden with Fountain.

GUARANTEE.—We guarantee that our goods must reach their destination in good condition, satisfactory to you, or they will be duplicated or money refunded. We are very careful to keep each variety true to name as labeled, and are ready at any time to replace, on proper proof, any that may prove otherwise.

NON-WARRANTY.—Most failures with plants and bulbs are due to causes entirely beyond our control, such as unfavorable weather or soil conditions, too deep or too shallow planting, etc., which renders it impossible for us to guarantee success and although we take all possible care to supply only such goods as will, under proper conditions, produce satisfactory results, we can give no warranty as to productiveness of any of the plants or bulbs we send out. It must, however, be plain to everyone who gives the matter the slightest thought, that it is to our best interests to send out only such stock as will reach perfection.

PLEASE NOTE.—It is not unusual for us to receive orders without any signature or identification mark attached—if you do not get a response to your order within a reasonable time, please write again enclosing copy of letter or order so we may be able to trace same quickly.

ERRORS.—We exercise the utmost care in filling orders, striving to do a little more than we offer; yet in the press of business, errors sometimes occur. In such a case, please notify us at once, and correction will be promptly and cheerfully made.

Please keep copies of all your orders for comparison.

Please send cash with the order sufficient to cover the whole bill. No C. O. D. orders accepted unless remittance be made on account to guarantee acceptance. Coin should not be sent by mail.

MAIL.—When plants are shipped via mail we remove the dirt; the roots are wrapped in damp moss, then placed in a heavy paper tube; this is a very satisfactory way to ship but they take a little time to recover, as they must be potted in fresh soil and handled with care for a few days.

EXPRESS.—This is the ideal way to ship plants as we give you a perfect ball of soil on every plant, the roots are undisturbed and they start growing from the first. Under the new ruling they go at special rates making the cost very reasonable.

QUALITY.—The many kind letters we receive every year complimenting us on the stock sent out are evidence enough that the quality of our goods cannot be approached.

J. E. JACKSON, Gainesville, Ga.

1923

SPRING AND SUMMER

JACKSON'S CATALOG

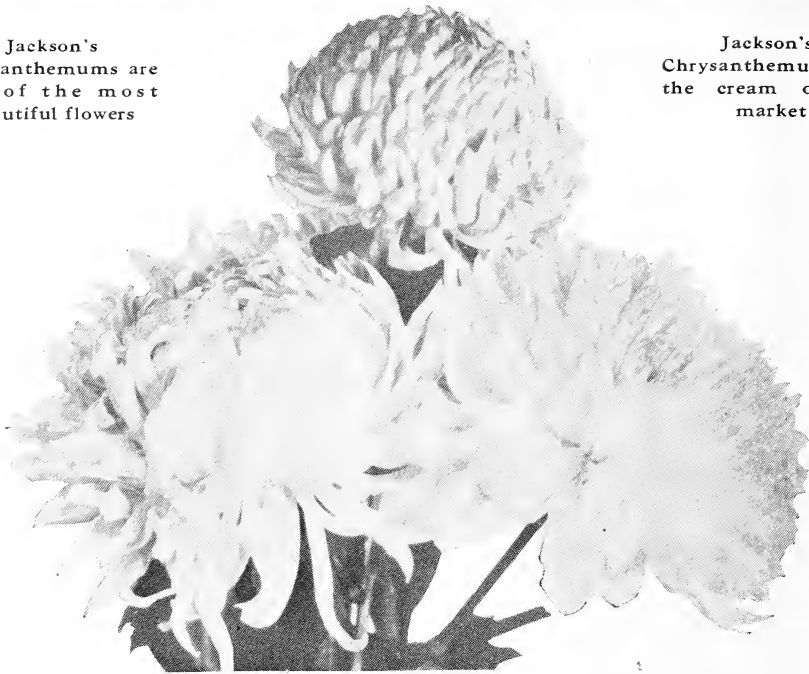
PIEDMONT GREENHOUSES

Specialties—Roses and Chrysanthemums

LARGEST GROWER OF ROSES IN THE SOUTH

Jackson's
Chrysanthemums are
one of the most
beautiful flowers

Jackson's
Chrysanthemums are
the cream of the
market



White—Miss Helen Frick

J. E. JACKSON

GAINESVILLE, GEORGIA